

527

CHERRY POINT

Composed and Arranged by
NEAL HEFTI

CONDUCTOR

(A) MEDIUM BLUES TEMPO (♩ = 120)
12 BARS = 24 SECONDS

BRASS

SAXS

(B) BRASS

mf SAXS

(C) BRASS

SAXS



©Copyright 1953 by Castle Music Corp.
 ©Copyright assigned 1958 to Neal Hefti Music, Inc., 57 West 56th St., New York, N. Y.
 This arrangement ©Copyright 1963 by Neal Hefti Music, Inc.
 International Copyright Secured Printed in U.S.A.
 All rights reserved including the right of public performance for profit

227

CHERRY POINT

Composed and Arranged by
NEAL HEFTI

1st Eb ALTO SAXOPHONE

A MEDIUM BLUES Tempo (♩ = 120)

B

C



©Copyright 1953 by Castle Music Corp.
©Copyright assigned 1958 to Neal Hefti Music, Inc., 57 West 56th St., New York, N. Y.
This arrangement ©Copyright 1963 by Neal Hefti Music, Inc.
International Copyright Secured Printed in U.S.A.
All rights reserved including the right of public performance for profit

DB 106

1st Eb ALTO SAXOPHONE

(D)

mf

(E) THE CHANT

PLAY OR SING

(f) OH-LWA TA-GOD

SI-AM OH LWA-TA-GOD

SI-AM OH LWA-TA GOOSE I Am

(F) PLAY

mf

f

mf

mf

RRARD

f

227

CHERRY POINT

Composed and Arranged by
NEAL HEFTI

2nd E♭ ALTO SAXOPHONE

(A) MEDIUM BLUES TEMPO (♩ = 120)

(B) mf

f

1. mf 2. mf

(C) f



©Copyright 1953 by Castle Music Corp.
 ©Copyright assigned 1958 to Neal Hefti Music, Inc., 57 West 56th St., New York, N. Y.
 This arrangement ©Copyright 1963 by Neal Hefti Music, Inc.
 International Copyright Secured Printed in U.S.A.
 All rights reserved including the right of public performance for profit

2nd E♭ALTO SAXOPHONE

(D)

mf

(E) **THE CLANT** **PLAY OR SING**

(f) OH-WA TA-GOO
SI-AM OH WHA-TA-GOO
SI-AM OH WHA-TA GOOSE I AM

(F) **PLAY**

mf

RITARD f

227

CHERRY POINT

Composed and Arranged by
NEAL HEFTI

1st B♭ TENOR SAXOPHONE

(A) MEDIUM BLUES Tempo (♩ = 120)

(B)

(C)



©Copyright 1953 by Castle Music Corp.
©Copyright assigned 1958 to Neal Hefti Music, Inc., 57 West 56th St., New York, N. Y.
This arrangement ©Copyright 1963 by Neal Hefti Music, Inc.
International Copyright Secured Printed in U.S.A.
All rights reserved including the right of public performance for profit

DB 106

1st Bb TENOR SAXOPHONE

(D)

mf

(E)

THE CHANT

PLAY AND SING

(f) OH WA TA GOO

SI AM OH WHA TA GOO

SI AM OH WHA TA GOOSE I AM

(F)

PLAY

mf

f

m2

m2

Ritard f

(227)

CHERRY POINT

Composed and Arranged by
NEAL HEFTI

2nd B \flat TENOR SAXOPHONE

(A) MEDIUM BLUES TEMPO ($\text{♩} = 120$)

Section A, first three staves of music. The first staff begins with a circled 'A' and a tempo marking 'MEDIUM BLUES TEMPO (♩ = 120)'. The music is written in a treble clef with a key signature of two flats. It features a series of eighth and quarter notes with slurs and ties, characteristic of a blues style.

Section B, first two staves of music. The first staff begins with a circled 'B' and a dynamic marking 'mf'. The music continues with eighth and quarter notes, including some triplet markings.

Section C, first two staves of music. The first staff begins with a circled 'C' and a dynamic marking 'mf'. It features a first ending bracket with a '1.' and a second ending bracket with a '2.'. The music consists of eighth and quarter notes.

Section C, last three staves of music. The first staff begins with a circled 'C' and a dynamic marking 'f'. The music continues with eighth and quarter notes, including triplet markings and slurs.



©Copyright 1953 by Castle Music Corp.
©Copyright assigned 1958 to Neal Hefti Music, Inc., 57 West 56th St., New York, N. Y.
This arrangement ©Copyright 1963 by Neal Hefti Music, Inc.
International Copyright Secured Printed in U.S.A.
All rights reserved including the right of public performance for profit

2nd B♭ TENOR SAXOPHONE

D

mf

E THE CLAWT PLAY OR SING

(f) OH-WA _____ TA-GOD _____

SI-AM _____ OH WHA-TA-GOD _____

SI-AM _____ OH WHA-TA GOOSE I AM

F PLAY

mf

mf

mf

f

RITARD

f

227

CHERRY POINT

Composed and Arranged by
NEAL HEFTI

E♭ BARITONE SAXOPHONE

A MEDIUM BLUES (emb) (♩ = 120)



©Copyright 1953 by Castle Music Corp.
 ©Copyright assigned 1958 to Neal Hefti Music, Inc., 57 West 56th St., New York, N. Y.
 This arrangement ©Copyright 1963 by Neal Hefti Music, Inc.
 International Copyright Secured Printed in U.S.A.
 All rights reserved including the right of public performance for profit

DB 106

BARI Chedy Point

(D)

mf

(E) (THE CHANT) (PLAY OR SING)

(f) OH-WA TA-GOO
SI-AM OH WUHA-TA GOO
SI-AM OH WUHA-TA GOOSE I AM

(F) Play

mf f mf mf f
RITARD

221

CHERRY POINT

Composed and Arranged by
NEAL HEFTI

1st TRUMPET in Bb

(A) MEDIUM BLUES Tempo (♩ = 120)

First two staves of section A. The first staff begins with a treble clef, a key signature of two flats (Bb), and a 4/4 time signature. It contains a melodic line starting with a quarter rest, followed by eighth and quarter notes. The second staff continues the melody with eighth and quarter notes, including a slur over a pair of eighth notes.

First two staves of section B. The first staff starts with a treble clef and a key signature of two flats. It features a rhythmic pattern of eighth notes with slurs. The second staff continues this pattern, including a dynamic marking of *mf* and a slur over a group of notes.

First and second endings. The first ending is marked '1.' and the second ending is marked '2.'. Both staves show melodic lines with slurs and dynamic markings of *f* and *mf*.

Section C, consisting of three staves. The first staff begins with a treble clef and a key signature of two flats. It contains a melodic line with slurs and dynamic markings. The second and third staves continue the melody with various note values and slurs.



©Copyright 1953 by Castle Music Corp.
 ©Copyright assigned 1958 to Neal Hefti Music, Inc., 57 West 56th St., New York, N. Y.
 This arrangement ©Copyright 1963 by Neal Hefti Music, Inc.
 International Copyright Secured Printed in U.S.A.
 All rights reserved including the right of public performance for profit

1st TRUMPET in Bb

(D)

Three staves of musical notation. Each staff begins with a dynamic marking of *fz* and an accent (>) over the first note. The notes are quarter notes on a staff with a key signature of one flat.

(E)

(Take Chant)
PLAY OR SING

Musical notation for section E, including lyrics and performance instructions. The lyrics are: OH - WA TA - GOD SI - Am OH (WATCh) WHA - TA GOO DH WHA - TA GOOSE I AM. Performance instructions include *f*, *mf*, and a circled word *PLAY*.

(F)

Musical notation for section F, featuring a melodic line with dynamics *f*, *mf*, and *ml*. The section concludes with a *f* dynamic and a *RITARD* instruction indicated by a dashed line.

227

CHERRY POINT

Composed and Arranged by
NEAL HEFTI

2nd TRUMPET in Bb

(A) MEDIUM BLUES (Tempto) (♩ = 120)



©Copyright 1953 by Castle Music Corp.
 ©Copyright assigned 1958 to Neal Hefti Music, Inc., 57 West 56th St., New York, N. Y.
 This arrangement ©Copyright 1963 by Neal Hefti Music, Inc.
 International Copyright Secured Printed in U.S.A.
 All rights reserved including the right of public performance for profit

2nd TRUMPET in B \flat

(D)

fz *fz*

(E)

(THE CHANT)
(PLAY OR SING)

(*f*) OH-WA — TA-GOO —
SI- Am — OH WHA-TA GOO —
SI- Am — OH WHA-TA GOOSE I Am — *mf* (PLAY)

(F)

mf *mf* *mf* *f*
Ritard

227

CHERRY POINT

Composed and Arranged by
NEAL HEFTI

3rd TRUMPET in B \flat

(A) MEDIUM BLUES Tempo (♩ = 120)

First staff: Treble clef, 4/4 time signature. Starts with a dynamic marking of *p*. The melody consists of quarter and eighth notes, with a slur over the first two measures. The second measure contains a dotted quarter note followed by an eighth note.

Second staff: Continuation of the melody from the first staff, ending with a dynamic marking of *mf*.

Third staff: Starts with a circled letter 'B'. The melody continues with eighth and quarter notes. A dynamic marking of *f* appears in the second measure.

Fourth staff: Continuation of the melody, ending with a dynamic marking of *mf*.

Fifth staff: Starts with a circled letter 'C'. The melody continues with quarter and eighth notes. A dynamic marking of *f* appears in the second measure.

Sixth staff: Continuation of the melody, ending with a dynamic marking of *f*.

Seventh staff: Continuation of the melody, ending with a dynamic marking of *f*.



©Copyright 1953 by Castle Music Corp.
 ©Copyright assigned 1958 to Neal Hefti Music, Inc., 57 West 50th St., New York, N. Y.
 This arrangement ©Copyright 1963 by Neal Hefti Music, Inc.
 International Copyright Secured Printed in U.S.A.
 All rights reserved including the right of public performance for profit

3rd TRUMPET in Bb

(D)

Musical notation for section D, consisting of three staves of music. The first staff begins with a dynamic marking of *f* and an accent (>). The second and third staves also feature dynamic markings and accents.

(E)

(THE CHANT)
(PLAY OR SING)

Musical notation for section E, starting with a chant melody. The first staff shows a melodic line with a dynamic marking of *f*.

(f) OH-WA —

TA-GOD —

Musical notation for section E, continuing the chant melody. The first staff shows a melodic line with a dynamic marking of *f*. The second staff shows a melodic line with a dynamic marking of *f*.

SI-AM

OH WHA-TA GOD —

Musical notation for section E, continuing the chant melody. The first staff shows a melodic line with a dynamic marking of *f*. The second staff shows a melodic line with a dynamic marking of *f*.

SI-AM —

OH WHA-TA GOOSE I AM

mf

(F)

Musical notation for section F, starting with a melodic line. The first staff shows a melodic line with a dynamic marking of *f*.

Musical notation for section F, continuing the melodic line. The first staff shows a melodic line with a dynamic marking of *f*.

Musical notation for section F, continuing the melodic line. The first staff shows a melodic line with a dynamic marking of *mf*. The second staff shows a melodic line with a dynamic marking of *mf*.

Musical notation for section F, continuing the melodic line. The first staff shows a melodic line with a dynamic marking of *f*.

Musical notation for section F, continuing the melodic line. The first staff shows a melodic line with a dynamic marking of *f*.

Ritard — — — — —

CHERRY POINT

Composed and Arranged by
NEAL HEFTI

4th TRUMPET in Bb

(A) MEDIUM BLUES TEMPO (♩ = 120)

The musical score for the 4th Trumpet part of "Cherry Point" is written in B-flat major and 4/4 time. It is divided into three sections: A, B, and C. Section A (measures 1-4) begins with a piano (*p*) dynamic and features a melodic line with slurs and accents. Section B (measures 5-12) starts with a mezzo-forte (*mf*) dynamic and includes a first ending (1.) and a second ending (2.). The dynamics in section B vary, including *mf*, *ff*, and *mf*. Section C (measures 13-16) continues the melodic development. The score is marked with various musical notations, including slurs, accents, and dynamic markings.

PLAY 3X's

(D)

Handwritten musical notation for section D, consisting of three staves of music. The first staff begins with a dynamic marking of *f*. The second staff has a dynamic marking of *f₂*. The third staff also has a dynamic marking of *f₂*. The notation includes various note values and rests.

(E)

(THE CHANT
(PLAY OR SING))

Handwritten musical notation for section E, including lyrics and dynamic markings. The first staff has the lyrics "OH WA" followed by a line. The second staff has the lyrics "TA-GOO" followed by a line. The third staff has the lyrics "SI-AM" followed by a line, and "OH WAH-TA-GOO" followed by a line. The fourth staff has the lyrics "SI-AM" followed by a line, and "OH WAH-TA-GOOSE I AM" followed by a line. A dynamic marking of *mf* is present. A circled word "PLAY" is written above the fourth staff.

(F)

Handwritten musical notation for section F, including lyrics and dynamic markings. The notation consists of four staves of music. The first staff has the lyrics "OH WAH-TA-GOOSE I AM" followed by a line. The second staff has the lyrics "OH WAH-TA-GOOSE I AM" followed by a line. The third staff has the lyrics "OH WAH-TA-GOOSE I AM" followed by a line. The fourth staff has the lyrics "OH WAH-TA-GOOSE I AM" followed by a line. Dynamic markings include *mf* and *ff*. A circled word "PLAY" is written above the first staff.

RIIARD

CHERRY POINT

Composed and Arranged by
NEAL HEFTI

1st TROMBONE

A MEDIUM BLUES Tempo (♩ = 120)

Section A, first three staves of music. The first staff begins with a treble clef, a key signature of one flat (B-flat), and a 4/4 time signature. The tempo is marked 'MEDIUM BLUES' and the tempo is 120 beats per minute. The music consists of eighth and quarter notes with various articulations and slurs.

Section B, first three staves of music. The first staff begins with a treble clef, a key signature of one flat, and a 4/4 time signature. The music features eighth notes and quarter notes with slurs and accents. Dynamics markings include *mf* and *f*. The section concludes with a first and second ending bracket.

Section C, three staves of music. The first staff begins with a treble clef, a key signature of one flat, and a 4/4 time signature. The music consists of quarter and eighth notes with slurs and accents. Dynamics markings include *p* and *f*. The section concludes with a final flourish.



©Copyright 1953 by Castle Music Corp.
 ©Copyright assigned 1958 to Neal Hefti Music, Inc., 57 West 56th St., New York, N. Y.
 This arrangement ©Copyright 1963 by Neal Hefti Music, Inc.
 International Copyright Secured Printed in U.S.A.
 All rights reserved including the right of public performance for profit

1st TROMBONE

(D)



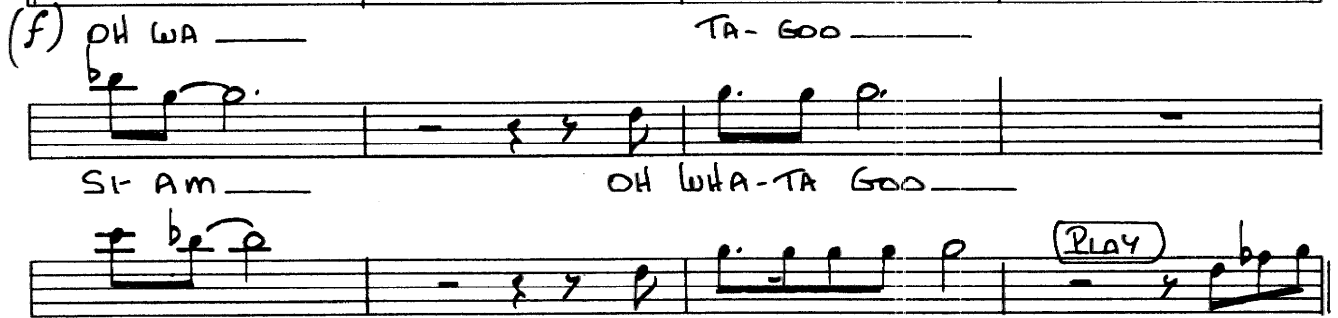
Musical notation for section D, consisting of three staves with notes and rests, including dynamic markings like *f* and accents.

(E) (THE CHANT)
(PLAY OR SING)



Musical notation for section E, starting with a circled 'E' and the instruction '(THE CHANT) (PLAY OR SING)', showing a melodic line on a staff.

(f) OH WA _____ TA- GOO _____



Musical notation for section F, starting with a circled 'F' and the instruction '(f)', including lyrics 'OH WA' and 'TA- GOO'.

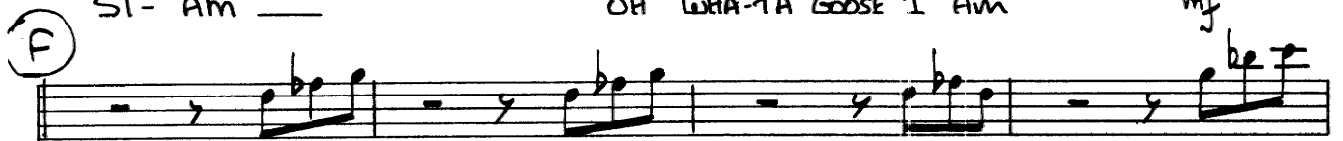
SI- AM _____ OH WHA-TA GOO _____



Musical notation for section F, including a circled 'Play' instruction.

SI- AM _____ OH WHA-TA GOOSE I AM _____ *mf*

(F)



Musical notation for section F, starting with a circled 'F', showing a melodic line with notes and rests.



Musical notation for section F, showing a melodic line with notes and rests.



Musical notation for section F, showing a melodic line with notes and rests, including dynamic markings like *mf*.



Musical notation for section F, showing a melodic line with notes and rests, including dynamic markings like *mf*.



Musical notation for section F, showing a melodic line with notes and rests, including dynamic markings like *f*.

Ritard. _____ *f* _____

CHERRY POINT

Composed and Arranged by
NEAL HEFTI

2nd TROMBONE

(A) MEDIUM BLUES Tempo (♩ = 120)

The musical score for the 2nd Trombone part of 'Cherry Point' is written in bass clef with a key signature of one flat (B-flat major/D minor). It consists of three main sections: Section A (measures 1-12), Section B (measures 13-24), and Section C (measures 25-36). Section A begins with a dynamic marking of *p* and features a melodic line with slurs and ties. Section B starts with a circled 'B' and includes dynamic markings of *mf*, *f*, and *mf*, with first and second endings indicated by '1.' and '2.'. Section C begins with a circled 'C' and contains a melodic line with slurs and ties, ending with a fermata. The score includes various musical notations such as slurs, ties, and dynamic markings.



©Copyright 1953 by Castle Music Corp.
©Copyright assigned 1958 to Neal Hefti Music, Inc., 57 West 56th St., New York, N. Y.
This arrangement ©Copyright 1963 by Neal Hefti Music, Inc.
International Copyright Secured Printed in U.S.A.
All rights reserved including the right of public performance for profit

DB 106

2nd TROMBONE

(D)

fz

(E) (THE CHANT)
(PLAY OR SING)

(f) OH- WA _____ TA- GOD _____

SI- Am _____ OH WHTA-TA GOD _____

SI- Am _____ OH WHTA-TA GOOSE I Am _____ *mf* (PLAY)

(F)

f

mf

mp

Ritard

227

CHERRY POINT

Composed and Arranged by
NEAL HEFTI

3rd TROMBONE

(A) MEDIUM BLUES TEMPO (♩ = 120)

(B)

1. 2.

(C)



©Copyright 1953 by Castle Music Corp.
 ©Copyright assigned 1958 to Neal Hefti Music, Inc., 57 West 56th St., New York, N. Y.
 This arrangement ©Copyright 1963 by Neal Hefti Music, Inc.
 International Copyright Secured Printed in U.S.A.
 All rights reserved including the right of public performance for profit

DB 106

3rd TROMBONE

(D)

Musical notation for section D, measures 1-4. The notation is on a single staff with a treble clef and a key signature of one flat. The notes are: measure 1: G4, A4, B4; measure 2: C5, B4, A4; measure 3: G4, F4, E4; measure 4: D4, C4, B3. Dynamics include *fz* and accents.

(E) THE CHANT
(PLAY OR SING)

Musical notation for section E, measures 5-7. The notation is on a single staff with a treble clef and a key signature of one flat. The notes are: measure 5: G4, A4, B4; measure 6: C5, B4, A4; measure 7: G4, F4, E4. Dynamics include *f* and accents.

(f) OH-LWA

TA-GOO

SI-AM

OH LWA-TA GOO

(PLAY)

SI-AM

OH LWA-TA GOOSE I AM

mf

(F)

Musical notation for section F, measures 8-13. The notation is on a single staff with a treble clef and a key signature of one flat. The notes are: measure 8: G4, A4, B4; measure 9: C5, B4, A4; measure 10: G4, F4, E4; measure 11: D4, C4, B3; measure 12: G4, A4, B4; measure 13: C5, B4, A4. Dynamics include *f*, *mf*, and *mp*. The word "RITARD" is written below the staff at the end of the section.

221

CHERRY POINT

Composed and Arranged by
NEAL HEFTI

4th TROMBONE

(A) MEDIUM BLUES TEMPO (♩ = 120)

First three staves of section A. The first staff begins with a treble clef, a key signature of one flat (B-flat), and a 4/4 time signature. The music consists of quarter and eighth notes with slurs and accents. The second staff continues the melody. The third staff includes a dynamic marking of *mf* at the end.

Section B, first three staves. The first staff begins with a bass clef. The music features eighth-note patterns with slurs and accents. The second staff continues the pattern. The third staff includes a first ending bracket labeled "1." and a second ending bracket labeled "2." with a dynamic marking of *mf*.

Section C, three staves. The first staff begins with a treble clef. The music consists of quarter and eighth notes with slurs and accents. The second staff continues the melody. The third staff includes a dynamic marking of *mf* and a final flourish.



©Copyright 1953 by Castle Music Corp.
©Copyright assigned 1958 to Neal Hefti Music, Inc., 57 West 56th St., New York, N. Y.
This arrangement ©Copyright 1963 by Neal Hefti Music, Inc.
International Copyright Secured Printed in U.S.A.
All rights reserved including the right of public performance for profit

4th TROMBONE

(D)

f₂ *f₂*

(E) (THE CHANT)
(PLAY OR SING)

(f) OH WA — TA- GOO —

SI- AM — OH WHA-TA GOO —

SI- AM — OH WHA-TA GOOSE I AM *mf*

PLAY

f *mf*

(F)

mf *f*

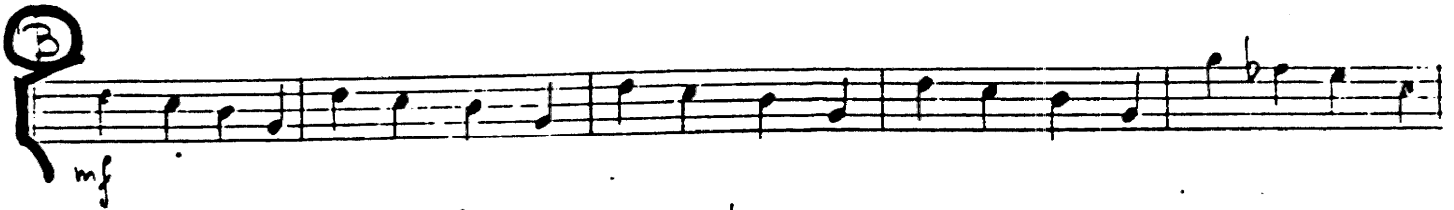
Ritard

BASS

CHERRY POINT

Composed and Arranged by
NEAL HEFTI

A MEDIUM BLUES TEMPO
(♩ = 120)



① PLAY 3 X'S

② CUES FOR ORIGINAL VOCAL

OH - WA - TA - GOD -

SI - Am - OH WHA - TA - GOD -

SI - Am - OH WHAT - A - GODSE I Am -

③

mf

f

mf

f

ritard

CHERRY POINT

GUITAR

Composed and Arranged by
NEAL HEFTI

A MEDIUM BLUES TEMPO
(♩ = 120)

B

mf $Fm7$ $Bb7$ $Bbm7$ $Eb7$

f $Bbm7$ $Eb7$ $Fm7$ $Bb7$ $D7$ $G7$ A° $G7$ $C7b9$ $F7b9$ $Eb9$ E°

1. Bb Eb E° Bb Eb E° Bb | 2. Bb Eb E° Bb Eb E° Bb $F7+9$

mf

C

$Bb9$ $Eb9$ $F7+9$ $Bb9$ $Fm7$ $Bb9$ $Bb7+9$

$Eb9$ $Eb9$ $F7+9$ $Bb9$ $G7b9$ $G7+9$

$C7b9$ $Eb9$ E° $F7+9$ $Bb9$ $Bb9$



©Copyright 1953 by Castle Music Corp.
 ©Copyright assigned 1958 to Neal Hefti Music, Inc., 57 West 56th St., New York, N. Y.
 This arrangement ©Copyright 1963 by Neal Hefti Music, Inc.
 International Copyright Secured Printed in U.S.A.
 All rights reserved including the right of public performance for profit

GUITAR

(D)

B^b9 B^b9 B^b9 B^b9

E^b9 E^b9 B^b9 B^b9

E^b9 E^b9 B^b9 B^b9

(E)

CUES FOR OPTIONAL VOCAL

B^b9 OH-LA- TA-GOO-

E^b9 - B^b9 SI-AM- OH LHA-TA-GOO

E^b9 B^b9 SI-AM- OH WHAT-A-GOOSE I AM-

(F)

F^m7 B^b7

B^bm7 Eb7 F^m7 B^b7 D7 G7 A° G7 E^b9

E^b9 F⁷_{b9} E^b9 E° B^b Eb E° B^b Eb E° B^b C⁷_{b9}

E^b9 F⁷_{b9} E^b9 E° B^b Eb E° B^b Eb E° B^b C⁷_{b9}

E^b9 F⁷_{b9} E^b9 E° B^b Eb E° B^b Eb E° B^b C⁷_{b9}

mf *f*

227

CHERRY POINT

Composed and Arranged by
NEAL HEFTI

DRUMS

(A) MEDIUM BLUES Tempo (♩ = 120)

The drum score consists of ten staves of music. The first staff (A) is marked with a tempo of 120 and a dynamic of *f*. The second staff (B) is marked with a dynamic of *mf*. The third staff (C) is marked with a dynamic of *mf* and includes first and second endings. The fourth staff (D) is marked with a dynamic of *f*. The fifth staff (E) includes vocal cues: "OH-WA" and "TA-GOO". The sixth staff includes vocal cues: "SI-Am", "OH WHA-TA-GOO", "SI-Am", and "OH WHAT A GOOSE I AM". The seventh staff is marked with a dynamic of *f*. The eighth staff is marked with a dynamic of *mf*. The ninth staff is marked with a dynamic of *f*. The tenth staff is marked with a dynamic of *mf* and includes a *Ritard* marking.



©Copyright 1953 by Castle Music Corp.
 ©Copyright assigned 1958 to Neal Hefti Music, Inc., 57 West 56th St., New York, N. Y.
 This arrangement ©Copyright 1963 by Neal Hefti Music, Inc.
 International Copyright Secured Printed in U.S.A.
 All rights reserved including the right of public performance for profit

227

CHERRY POINT

PIANO

Composed and Arranged by
NEAL HEFTI

A MEDIUM BLUES TEMPO
♩ = 120

B

f *mf*

A *D*
Fm⁷ C Bb7 F

B^bm⁷ E^b7 Fm⁷ - B^b7 D⁷ G⁷ A^o G⁷ E^b9 F⁷₉

f

1. 2.

F⁷₉ E^b9 E^o B^b E^b E^o B^b E^b E^o B^b B^b E^b E^o B^b F⁷₉ +₅

mf



©Copyright 1953 by Castle Music Corp.
 ©Copyright assigned 1958 to Neal Hefti Music, Inc., 57 West 56th St., New York, N. Y.
 This arrangement ©Copyright 1963 by Neal Hefti Music, Inc.
 International Copyright Secured Printed in U.S.A.
 All rights reserved including the right of public performance for profit

PIANO

②

③

④ (THE CHANT) (CUES FOR OPTIONAL VOCAL)

PIANO

SI - Am OH WHAT-A GOO

Eb9 Bb9

SI - Am OH WHAT-A GOOSE I AM

Eb9 Bb9

Fm7 Bb7 Bbm7 Eb7

Bbm7 Eb7 Fm7 Bb7 D7 G7 A° G C7b9 f F7b9 Eb9 E°

Bb Eb E° Bb Eb E° Bb C7b9 ml F7b9 Eb9 E° Bb Eb E° Bb

Eb E° Bb C7b9 f F7b9 Eb9 E° Bb Ritard