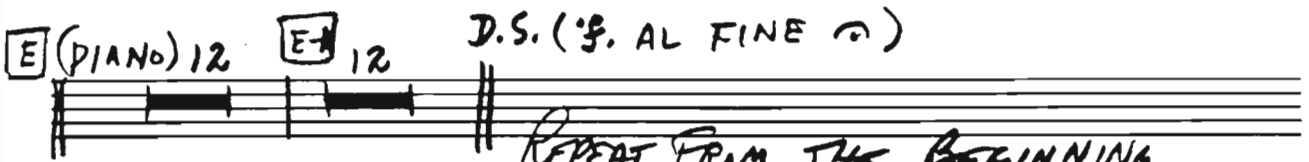
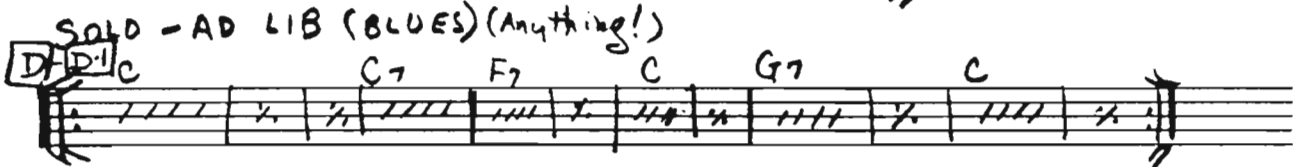
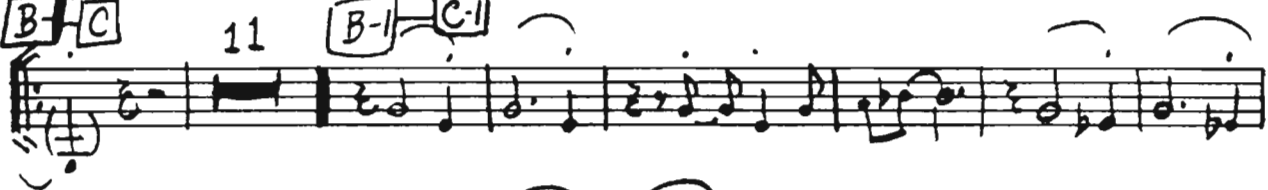
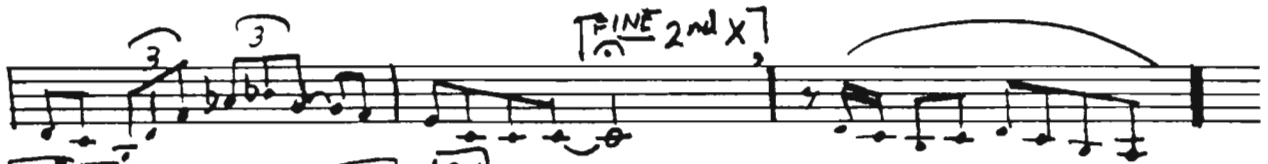


1<sup>ST</sup> TRUMPET  
♩. MEDIUM

# COOL BLUES



REPEAT FROM THE BEGINNING

2<sup>nd</sup> TRUMPET

COOL BLUES

MEDIUM

S.

(S. TO FINE)



Alpheus Music Corp

Catalog TT-7

3rd TRUMPET  
MEDIUM

COOL BLUES

3-186

Repeat from Beginning  
(S. TO FINE)

4th TRUMPET

COOL BLUES

♩. MEDIUM

Dis. Repeat from beginning (4. TO FINE)

1ST TROMBONE

COOL BLUES

3-186

G. MEDIUM

fp *bō p. o. p. o. p.* fp die

[A]

3

1 FINE

[B] 11 [B-1]

2 [C] 12 [C-1]

2 [D] 12 [D-1] 7

2 [E] 12

if you desire - - - (1 sec)

[E] 12

D.S. Repeat from Beginning (S. TO FINE)



Alpha Music Corp. Fullwood Calif. U.S.A.

Cataly TT-7

2nd TROMBONE

COOL BLUES

3-186

MEDIUM

S.

A

B-1

2 C 12 G

2 D 12

D-1 7 2 E 12

E-1 12 D.S. Repeat from Beginning (S. TO FINE)



Alpha Music Corp

Catalog TT-7

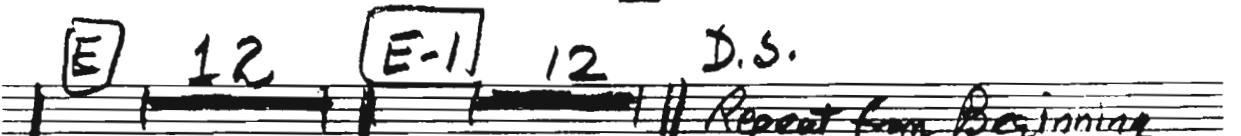
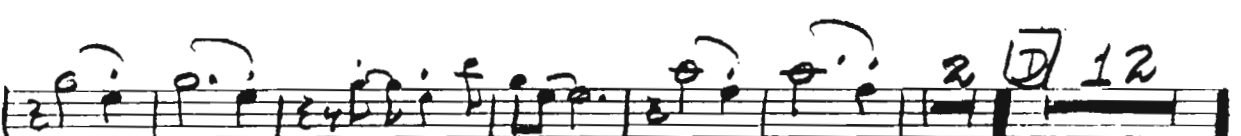
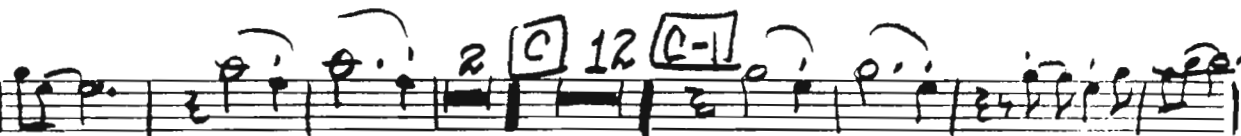
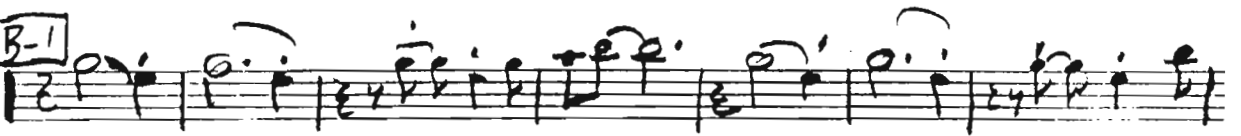
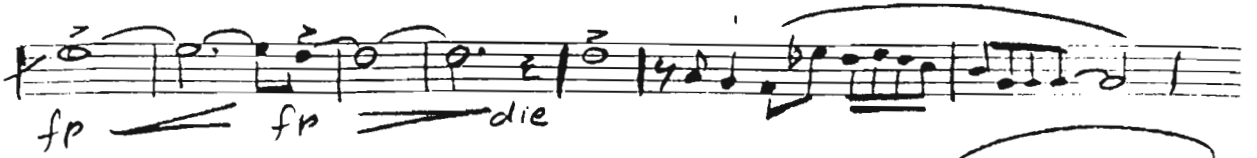
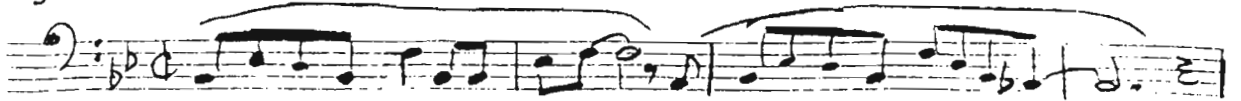
3rd TRON BONE

# COOL BLUES

3-186

MEDIUM

8.



Repeat from Beginning (S. TO FINE)

# COOL BLUES

3-186

4TH TROMBONE

MEDIUM

S.

fp fp die

A

3

3

FFINE 2nd X

B

11

B-1

2 C 12 C-1

2 D 12

D-1 7 2

E 12 E-1 12

D.S. Repeat from Beginning (S. TO FINE)



1ST SAX - E♭ ALTO

# COOL BLUES

*♩* MEDIUM

Handwritten musical notation for the first system, including a treble clef, a key signature of one sharp (F#), and a 4/4 time signature. The notation consists of a single staff with various rhythmic values and slurs.

Handwritten musical notation for the second system, starting with a boxed letter 'A' in the left margin. It continues the melodic line with slurs and triplet markings.

Handwritten musical notation for the third system, featuring triplet markings and a boxed 'FINE' instruction with a circled '2nd X' below it.

Handwritten musical notation for the fourth system, including a boxed 'B' and a circled '11' above a measure, followed by a boxed 'B-1' with a circled sharp symbol.

Handwritten musical notation for the fifth system, starting with a circled '1' and a circled '(Solo) C' above a measure.

Handwritten musical notation for the sixth system, continuing the melodic development with various slurs and accidentals.

Handwritten musical notation for the seventh system, ending with a boxed 'C-1' and the text 'AD LIB' above it.

Handwritten musical notation for the eighth system, featuring a series of chords: G<sub>9</sub>, G<sub>7</sub>, C<sub>9</sub>, G<sub>9</sub>, D<sub>7</sub>, G<sub>9</sub>, and a boxed 'D' with a circled '11' above it.

Handwritten musical notation for the ninth system, showing a melodic line with slurs and rests.

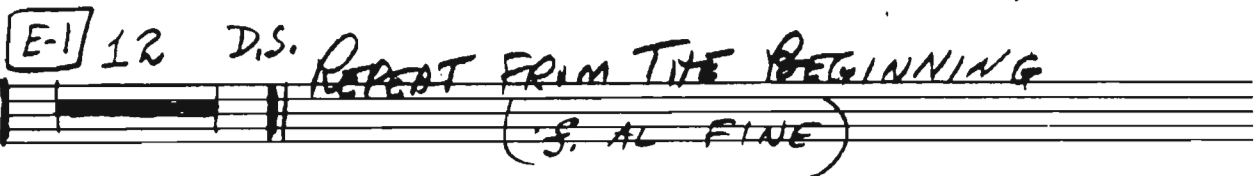
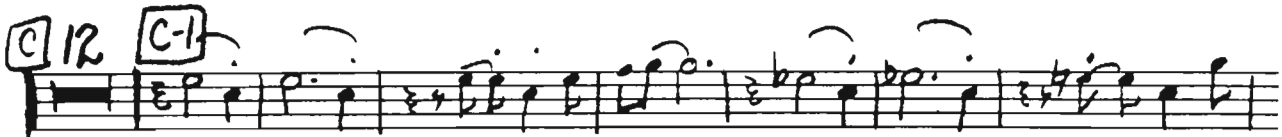
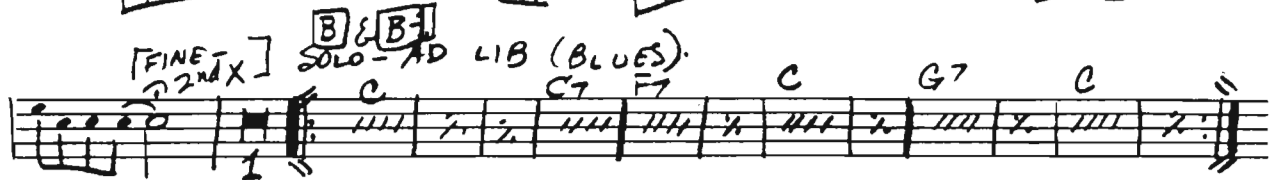
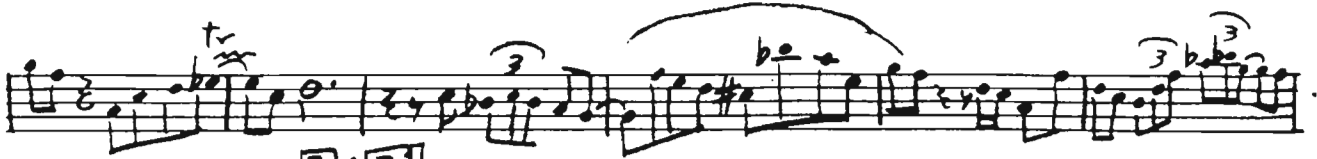
Handwritten musical notation for the tenth system, including a circled '2', a boxed 'F' with 'PIANO' above it, a circled '12', a boxed 'E-1' with a circled '12', and a circled 'D.S.' at the end.

*Repeat from Beginning: (S. to FINE)*

2nd SAX - Bb TENOR

# COOL BLUES

MEDIUM



3rd SAX - Eb ALTO

# COOL BLUES

MEDIUM

S.

(A)

(B) 11 (B-1)

(C) 12 (C-1)

(D) 11 (D-1)

(E) 12 (E-1) 12

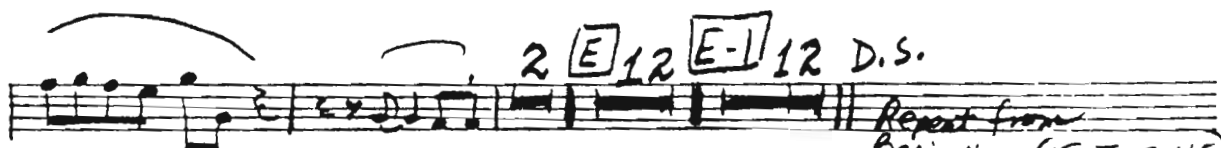
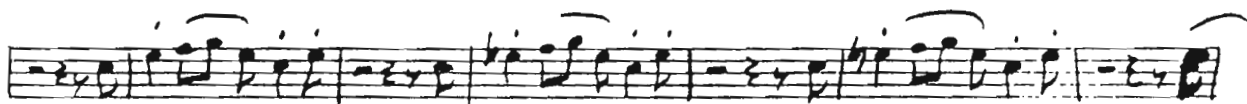
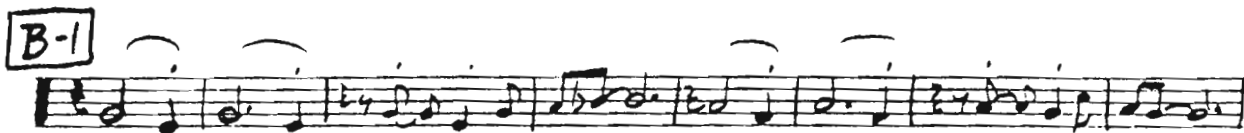
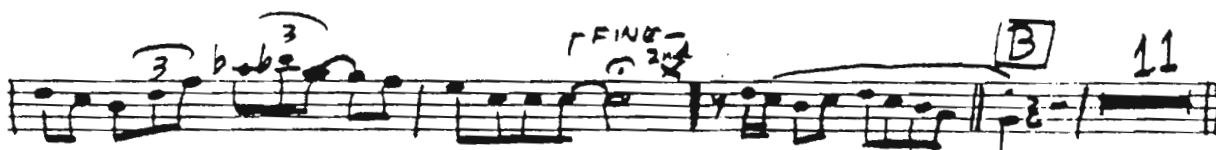
D.S. Repeat from beginning (S. to FINE)

FINE  
2nd AX

4th SAX - Bb TENOR

# COOL BLUES

MEDIUM



Repeat from Beginning (S. TO FINE)



Alphas Music Corp

Catalog TT-7

5th SAX - Eb BARITONE

COOL BLUES

MEDIUM

fp — fp — die

A

trm

CINE 2NDX

B 11 B-1

2 C 12

C-1

2 D 11 D-1

2 E 12 E-1 12 D.S.

Repeat from Beginning (S. TO FINE)

RHYTHM SECTION

COOL BLUES

- PIANO
- BASS
- DRUMS
- GUITAR
- ACCORDION
- ANY "C" INSTRUMENT
- (MEDIUM)

BASS Bb  
Piano 8va down  
Bb7 Eb7

Eb7 Bb Bb maj7 F7 Cm7

A Bb Bb7

Eb7 Bb7 Bb G7 Cm7 F7 Bb FINE

A TIMES Blues sequence (similar to above)

Piano Solo  
Bb Bb7 Eb7 Bb F7  
D-S. (F. AL FINE)  
REPEAT FROM THE BEGINNING

RHYTHM SECTION

COOL BLUES

- PIANO
- BASS
- DRUMS
- GUITAR
- ACCORDION
- ANY "C" INSTRUMENT
- MEDIUM

BASS Bb

Piano 8va down

Eb7 Bb Bb maj7 F7 Cm7 F7

A

Bb Bb7

Eb7 Bb7 Bb G7 Cm7 F7 Bb

FINE 2ND X

A TIMES

Blues sequence (similar to above)

PIANO SOLO = 4<sup>th</sup> TIME

Bb Bb7 Eb7 Bb F7

Bb Bb Bb7 Eb7 Bb F7

D-I E-I

D.S. (S. AL FINE)

REPEAT FROM THE BEGINNING

RHYTHM SECTION

COOL BLUES

- PIANO
- BASS
- DRUMS
- GUITAR
- ACCORDION
- ANY "C" INSTRUMENT
- MEDIUM

BASS Bb

Piano 8va down

Eb7 Bb Bb maj7 F7 Cm7 F7

A

Bb Bb Bb7

Eb7 Bb7 Bb G7 Cm7 F7 Bb

FINE 2nd MAX

A TIMES Blues sequence (similar to above)

PIANO SOLO: 4<sup>th</sup> TIME

Piano Solo

Bb Bb Bb7 Eb7 Bb F7

Bb Bb Bb7 Eb7 Bb F7

D-1-E-1

D.S. (S. AL FINE)

REPEAT FROM THE BEGINNING



RHYTHM SECTION

COOL BLUES

- PIANO
- BASS
- DRUMS
- GUITAR
- ACCORDION
- ANY "C" INSTRUMENT
- MEDIUM

BASS Bb

Piano 8va down

Eb7 Bb Bb maj7 F7 Cm7 F7

A Bb Bb7

Eb7 Bb7 Bb G7 Cm7 F7 Bb

FINE 2nd X

A TIMES - Blues sequence (similar to above)

PIANO SOLO - 4th TIME

Bb Bb Bb7 Eb7 Bb F7

Bb Bb Bb7 Eb7 Bb F7

D-I-E-I D.S. (S. AL FINE)

REPEAT FROM THE BEGINNING