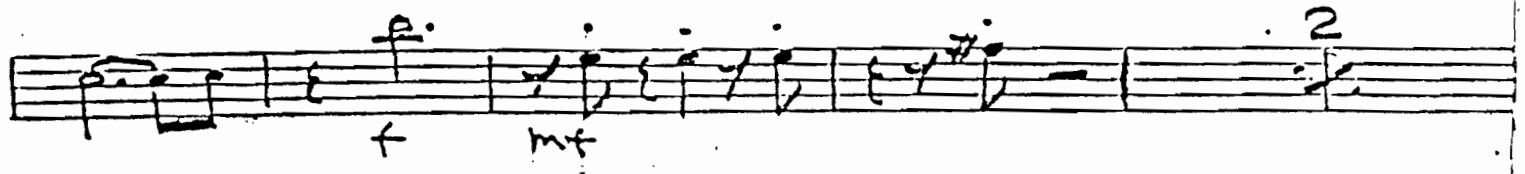
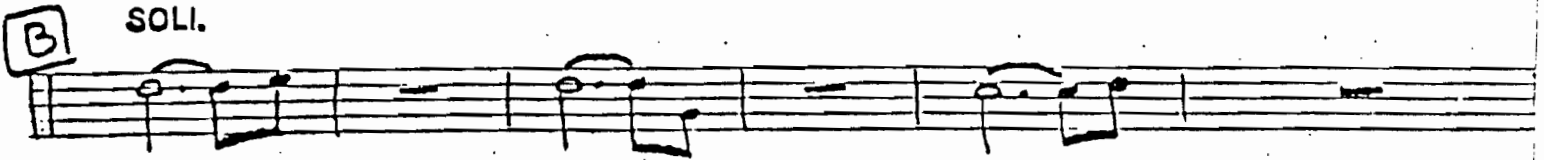
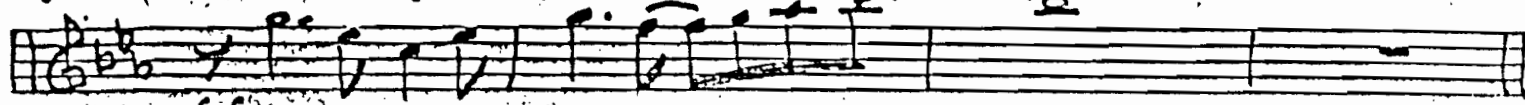


1ST TRUMPET

Don't Be That Way

med

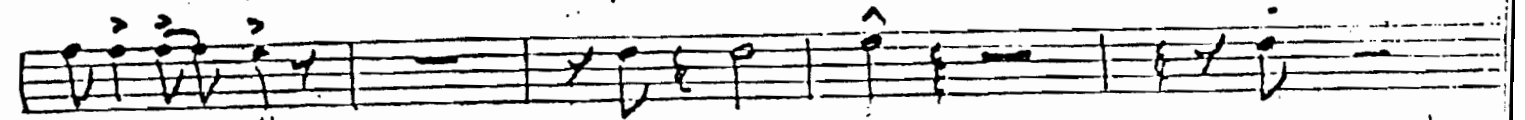
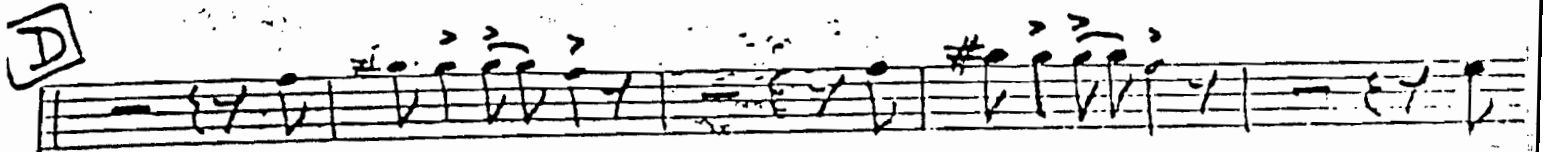
unis



ST. MUTE



ST. MUTE



DON'T BE THAT WAY

1ST TRPT

2-

Handwritten musical score for 1st Trumpet. The score consists of ten staves of music. The first staff has a dynamic marking of *or* above it. The second staff has a boxed letter **E** at the beginning. The third staff has a boxed letter **F** at the end. The fourth staff has a boxed letter **G** at the beginning. The fifth staff has a boxed letter **H** at the beginning, the instruction "keep Fading" above it, and a dynamic marking of *mf* below it. The sixth staff has a boxed letter **I** at the beginning, the instruction "1st" above it, and a dynamic marking of *ff* below it. The seventh staff has a boxed letter **J** at the beginning, the instruction "2nd ST. MUTE" above it, and a dynamic marking of *ff* below it. The eighth staff has a boxed letter **K** at the beginning, the instruction "3rd OPEN Drum Break" above it, and a dynamic marking of *ff* below it. The ninth staff has a boxed letter **L** at the beginning, a dynamic marking of *ff* below it, and a "2" above the staff. The tenth staff has a boxed letter **M** at the beginning, a dynamic marking of *ff* below it, and a "T-1" above the staff.

2ND TRUMPET

Don't Be That Way

mus

A

ff

mf

2

1st

2nd

B

SOLI.

f

mf

2

ST. MUTE

C

2nd time

1st

2nd

D

2nd TRPT

DONT BE THAT WAY

2-

open

G

H

Keep Fading

ff

3rd OPEN

Drum Break

H

3RD TRUMPET

Send Back That Way

mus

1st

mf

2

A

mf

2

1st

mf

2nd

B

SOLL

1

f

mf

2

f

ST. MUTE

C

2nd time

1

1st

2nd

D

mf

3RD TRPT

DON'T BE THAT WAY

2-

REHEARSAL

T-3

E

F

G

H PLAY 3 TIMES Keep Fading

1st

2nd ST. MUTE

3rd OPEN Drum Break

4TH TRUMPET

Don't Be That Way

Handwritten musical notation for the first staff, featuring a treble clef, a key signature of two flats (Bb and Eb), and a 4/4 time signature. The melody begins with a quarter rest, followed by quarter notes G4, A4, Bb4, and C5. A slur covers the next four notes: D5, E5, F5, and G5. A dynamic marking of *ff* is placed below the first measure. A *tr* (trill) marking is above the first note of the slur. A fermata is placed over the final note of the slur.

Handwritten musical notation for the second staff, marked with a circled 'A'. It contains a rhythmic pattern of eighth notes: G4, A4, Bb4, C5, D5, E5, F5, G5. A dynamic marking of *ff* is present. A slur with a '2' above it covers the last two notes, G5 and F5.

Handwritten musical notation for the third staff, divided into two measures. The first measure is labeled '1st' and the second '2nd'. Both measures contain a rhythmic pattern of eighth notes: G4, A4, Bb4, C5, D5, E5, F5, G5.

Handwritten musical notation for the fourth staff, marked with a circled 'B' and the word 'SOLL'. It begins with a treble clef and a key signature of one flat (Bb). The melody consists of quarter notes G4, A4, Bb4, and C5, followed by a half rest.

Handwritten musical notation for the fifth staff, featuring a rhythmic pattern of eighth notes: G4, A4, Bb4, C5, D5, E5, F5, G5. A dynamic marking of *f* is placed below the first measure. A slur with a '2' above it covers the last two notes, G5 and F5.

Handwritten musical notation for the sixth staff, featuring a rhythmic pattern of eighth notes: G4, A4, Bb4, C5, D5, E5, F5, G5. A dynamic marking of *f* is placed below the first measure.

Handwritten musical notation for the seventh staff, featuring a rhythmic pattern of eighth notes: G4, A4, Bb4, C5, D5, E5, F5, G5. A dynamic marking of *f* is placed below the first measure. A slur with a '2' above it covers the last two notes, G5 and F5.

ST. MUTE

Handwritten musical notation for the eighth staff, marked with a circled 'C'. It begins with a treble clef and a key signature of one flat (Bb). The melody consists of quarter notes G4, A4, Bb4, and C5, followed by a half rest. A dynamic marking of *f* is present. A slur with a '2' above it covers the last two notes, G5 and F5.

Handwritten musical notation for the ninth staff, divided into two measures. The first measure is labeled '1st' and the second '2nd'. Both measures contain a rhythmic pattern of eighth notes: G4, A4, Bb4, C5, D5, E5, F5, G5.

Handwritten musical notation for the tenth staff, marked with a circled 'D'. It features a rhythmic pattern of eighth notes: G4, A4, Bb4, C5, D5, E5, F5, G5. A dynamic marking of *f* is present. A slur with a '2' above it covers the last two notes, G5 and F5.

Handwritten musical notation for the eleventh staff, featuring a rhythmic pattern of eighth notes: G4, A4, Bb4, C5, D5, E5, F5, G5. A dynamic marking of *f* is present. A slur with a '2' above it covers the last two notes, G5 and F5.

4TH TRPT

DON'T BE THAT WAY

(40)

T. 4

1st OPEN

E

G

E

Keep Fading

2

1st

2nd

ST. MUTE

3rd OPEN Drum Break

ft

2

1ST TROMBONE

Don't Be That Way

A

B

ST. MUTED

C

D

1st BONE

2-

Don't be THAT way

40

B-1

with U.S. ...

open

(Bone 2 Solo)

G

Keep Fading

3rd OPEN Drum Break

2ND TROMBONE

Don't Be That Way

First staff of music with bass clef, key signature of two flats, and a double bar line with a '2' indicating a second ending.

Section A: First staff of music with a box labeled 'A', a repeat sign, and a 'mf' dynamic marking.

Section A: Second staff of music with first and second endings marked '1st' and '2nd'.

Section B: First staff of music with a box labeled 'B' and a key signature change to one flat.

Section B: Second staff of music with a '2' and a double bar line.

Section B: Third staff of music with a key signature change to one flat.

Section B: Fourth staff of music with a key signature change to one flat and the instruction 'ST. MUTE'.

Section C: First staff of music with a box labeled 'C', a key signature change to two flats, and the instruction '2nd time only'.

Section C: Second staff of music with first and second endings marked '1st' and '2nd'.

Section D: First staff of music with a box labeled 'D' and various accents and slurs.

Section D: Second staff of music with various accents and slurs.

2nd BONE

DONT BE THAT WAY

(2)

OPEN

B-2

SOLO

Chord symbols: A^b , B^b-7 , E^b+7 , A^b , B^b-7 , E^b7

Keep Fading

1st 2nd ST. MUTE

3rd OPEN Drum Break

2

2

B-2

3RD TROMBONE

Don't Be That Way

A

B

ST. MUTE

C

D

3rd BONE

OPEN

Keep Fading

f

Don't Be that way

4TH TROMBONE

Don't Be That Way

First staff of music, bass clef, key signature of two flats, 4/4 time signature. It contains the first few notes of the piece.

A

Second staff of music, starting with a first ending bracket and a '2' above it. Includes a 'mt' marking.

Third staff of music, continuing the first ending with a '2nd' marking above it.

B

Fourth staff of music, beginning the second section of the piece.

Fifth staff of music, continuing the second section with a '+' marking below it.

Sixth staff of music, continuing the second section with an accent (^) above the final note.

Seventh staff of music, continuing the second section.

ST. MUTE

C

Eighth staff of music, beginning the third section with a '2nd time' marking below it.

Ninth staff of music, continuing the third section with a '2nd' marking above it.

D

Tenth staff of music, continuing the third section with accents (^) above several notes.

Eleventh staff of music, continuing the third section with an accent (^) above a note.

4th Bone

2-

111

13-4

Handwritten musical notation for the first system. The top staff is a treble clef with notes and rests. The bottom staff is a bass clef with notes and rests. Annotations include "OPEN" above the treble staff and "13-4" at the end of the system.

Handwritten musical notation for the second system. The top staff shows a whole note chord labeled "E". The bottom staff has notes and rests.

Handwritten musical notation for the third system. The top staff is a bass clef with notes and rests. The bottom staff is a treble clef with notes and rests. Annotations include "Keep Fading" above the bass staff and "2" above the treble staff.

Handwritten musical notation for the fourth system. The staff is a treble clef with notes and rests. Annotations include "1st" above the first measure and "2nd ST. MUTE" above the second measure.

Handwritten musical notation for the fifth system. The staff is a treble clef with notes and rests. Annotations include "3rd OPEN" above the first measure and "Drum Break" above the second measure.

Handwritten musical notation for the sixth system. The staff is a treble clef with notes and rests. Annotation includes "2" above the second measure.

Handwritten musical notation for the seventh system. The staff is a treble clef with notes and rests.

Don't Be that way

Clarinet Solo

Don't Be That Way

duets **A** Saxes Brass

B Brass SOLO

C

G6 A-7 D7 G6 A-7 D7 3

G6 A-7 D7 G6 A-7 D7

G6 A-7 D7 G6 A-7 D7

G6 A-7 D7 G6 G6

D SOLO

G6 A-7 D7 G6 A-7 D7

G6 A-7 D7

E Band - Drums **F** Trum SOLO SOLO

CL.

DON'T BE THAT WAY

CL - P. 2

A7 A7 D7

D7 G7 C7

C7 B7 H

cl

CLAR. P. 2

ALTO SAX

1

Don't Be that way

SOLI. *unifs*

A

2nd

B

SOLI.

C

2nd

SOLI.

D

DON'T BE THAT WAY

ALTO 1

p. 2

Handwritten musical score for Alto 1, page 2 of "Don't Be That Way". The score consists of 11 staves of music. The first staff is a vocal line with notes and rests. The second staff is a piano accompaniment starting with a 'p' dynamic. The third and fourth staves continue the piano accompaniment with various rhythmic patterns and accidentals. The fifth staff has a boxed 'E' above it. The sixth staff has a boxed 'F' above it. The seventh staff has a boxed 'G' above it. The eighth staff has a boxed 'H' above it and includes the instruction "Keep Fading last 8 Full" written below the staff. The ninth staff has a '1' above it. The tenth and eleventh staves are labeled "1st", "2nd", "3rd", and "4th" respectively, and are marked as "Drum Break".

2ND ALTO SAX

Don't Be That Way

SOLI.

Musical notation for the first system of "Don't Be That Way" for 2nd Alto Sax. It includes a treble clef, a key signature of two flats (Bb, Eb), and a 4/4 time signature. The first staff shows the melody with a "SOLI." marking. The second staff is marked "A" and contains a complex melodic line with slurs and accents. The third staff continues the melodic line. The fourth staff is marked "2nd" and contains a bass line with a "B" box and accents.

Musical notation for the second system of "Don't Be That Way" for 2nd Alto Sax. It continues the melodic and bass lines from the first system. The fifth staff has slurs and accents. The sixth staff has slurs and accents. The seventh staff has slurs and accents. The eighth staff has slurs and accents.

Musical notation for the third system of "Don't Be That Way" for 2nd Alto Sax. It includes a treble clef, a key signature of two sharps (F#, C#), and a 4/4 time signature. The ninth staff is marked "C" and contains a melodic line with slurs and accents. The tenth staff continues the melodic line. The eleventh staff is marked "2nd" and contains a bass line with a "D" box and accents. The twelfth staff is marked "SOLI." and contains a melodic line with slurs and accents.

DON'T BE THAT WAY

ALTO 2

p. 2

#

p

1

E

F

G

H

Keep Fading out & Full

1st

2nd

3rd Stream Break

4th

A-2

T. TENOR SAX 1

1st

Don't Be That Way

SOLI.

Musical notation for the first system, including a treble clef, key signature of two flats, and a 4/4 time signature. It features a melody line and a bass line with a "2nd" part. Section A is marked with a box "A".

Musical notation for the second system, continuing the melody and bass line. Section B is marked with a box "B".

Musical notation for the third system, including a treble clef and a key signature change to one sharp. Section C is marked with a box "C".

Musical notation for the fourth system, including a treble clef and a key signature change to one sharp. Section D is marked with a box "D".

mf

T.S-1

DON'T BE THAT WAY

TENOR 1

p. 2

Keep Fading last 8 Full

2ND TENOR SAX

Don't Be That Way

SOLO *travis*

Musical staff with treble clef, key signature of two flats (Bb, Eb), and a whole note chord.

Musical staff starting with a boxed 'A' section, containing a melodic line with a triplet of eighth notes.

Musical staff continuing the melodic line from the previous staff, ending with a double bar line.

Musical staff starting with a boxed 'B' section, containing a melodic line with accents.

Musical staff continuing the melodic line from the previous staff, featuring accents and slurs.

Musical staff continuing the melodic line from the previous staff, ending with a triplet of eighth notes.

Musical staff continuing the melodic line from the previous staff, ending with a double bar line.

Musical staff continuing the melodic line from the previous staff, ending with a double bar line.

Musical staff starting with a boxed 'C' section, containing a melodic line with a dynamic marking 'p'.

Musical staff continuing the melodic line from the previous staff, ending with a double bar line.

Musical staff starting with a boxed 'D' section, containing a melodic line with a dynamic marking 'p' and a measure rest.

DON'T BE THAT WAY

TENOR 2

p. 2

Keep Fading least 8 Full

BARI

1

1

Don't be that way

SOLI.

rit.

A

mf

2nd

B

SOLI.

C

p

1st

2nd

SOLI.

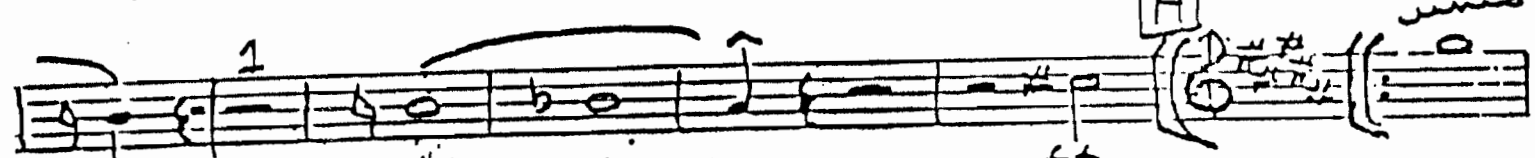
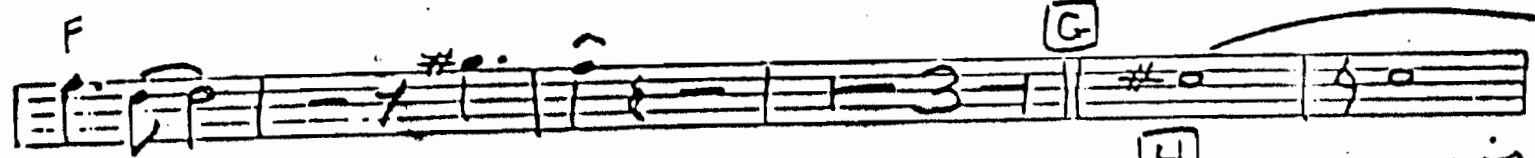
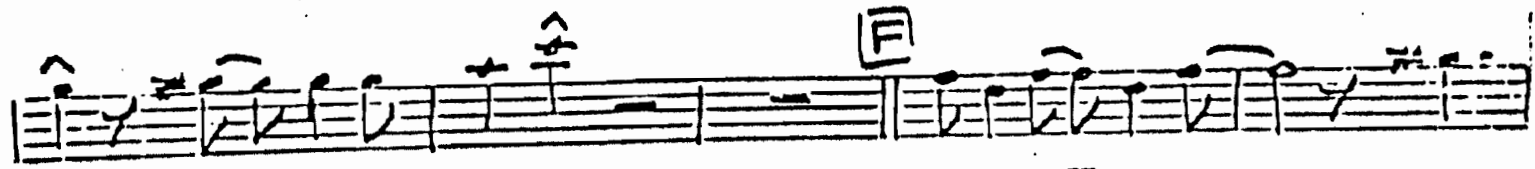
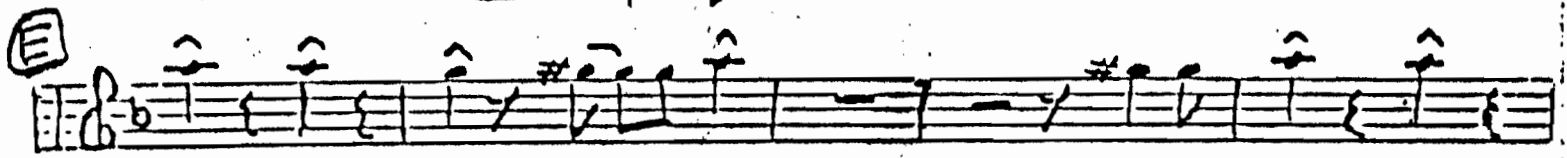
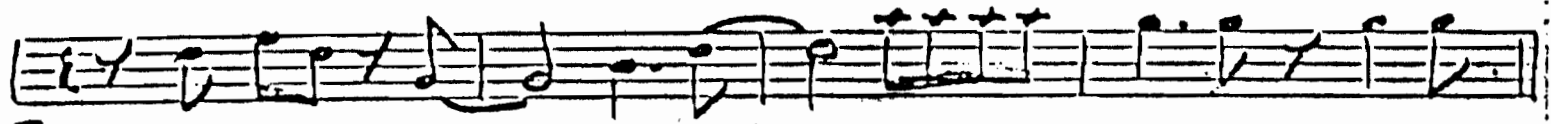
D

f

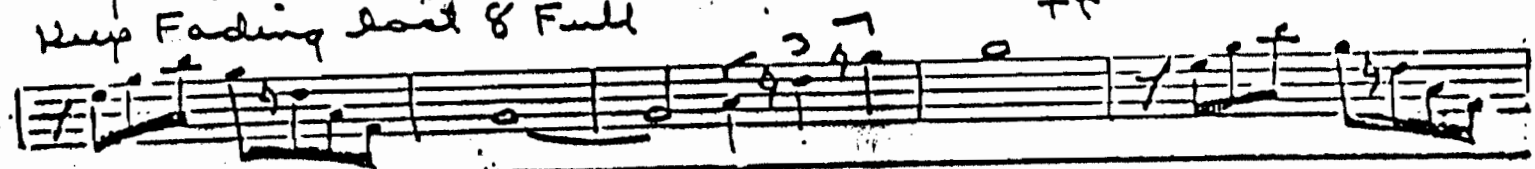
DON'T BE THAT WAY

BARi

p. 2



Keep Fading last 8 Full



Drum Break

BASS

Don't Be THAT Way

41

A

1st

C

1st

D

E7

A7

D7

G7

C7+5

Handwritten musical notation for the first staff, featuring a treble clef and a key signature of one flat (Bb). The notation consists of a series of eighth and quarter notes.

Drum Break

... solo with Piano

Handwritten musical notation for the second staff, starting with a '2' above the first measure. The notation continues with eighth and quarter notes.

F

Handwritten musical notation for the third staff, with '2' above the second and seventh measures. The notation continues with eighth and quarter notes.

G

Handwritten musical notation for the fourth staff, with a 'G' above the fifth measure. The notation continues with eighth and quarter notes.

Handwritten musical notation for the fifth staff, featuring a treble clef and a key signature of one sharp (F#). The notation continues with eighth and quarter notes.

H

Handwritten musical notation for the sixth staff, with '2' above the second and seventh measures. The notation continues with eighth and quarter notes.

Handwritten musical notation for the seventh staff, divided into '1st' and '2nd' sections. The notation continues with eighth and quarter notes.

3rd Drum Break

Handwritten musical notation for the eighth staff, starting with a '3rd Drum Break' label. The notation continues with eighth and quarter notes.

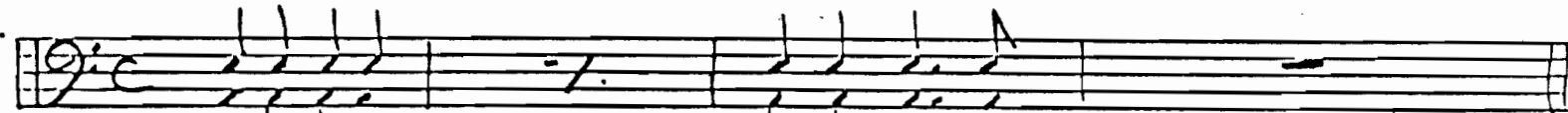
Handwritten musical notation for the ninth staff, with a '2' above the seventh measure. The notation continues with eighth and quarter notes.

Handwritten musical notation for the tenth staff, featuring a treble clef and a key signature of one flat (Bb). The notation continues with eighth and quarter notes.

Don't Be that Way

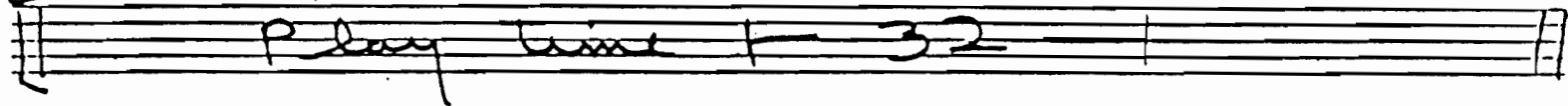
RUMS

Don't Be That Way

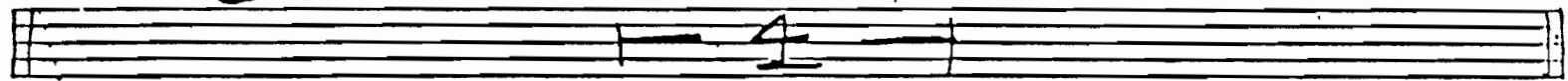


A

saxes on Brass in 2



Brass into clar solo

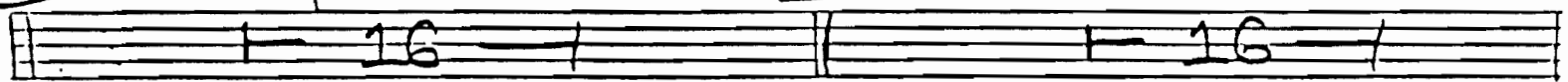


C

swing dir 4

D

saxes + clar solo



E

SOLO

Brass



Piano

F

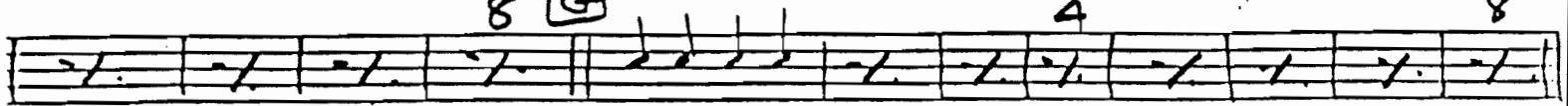
trump solo



8 **G** Clar.

4

8

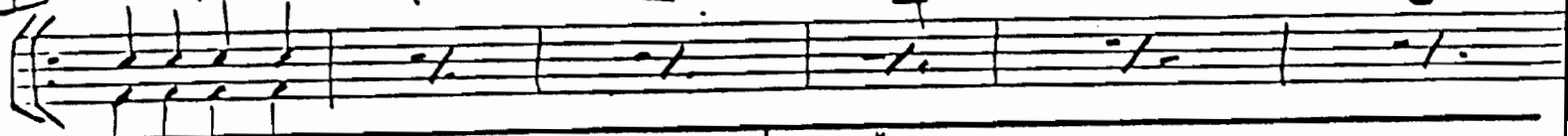


H

Keep Feeding Backets $\frac{2}{2}$

4

6



1st

2nd

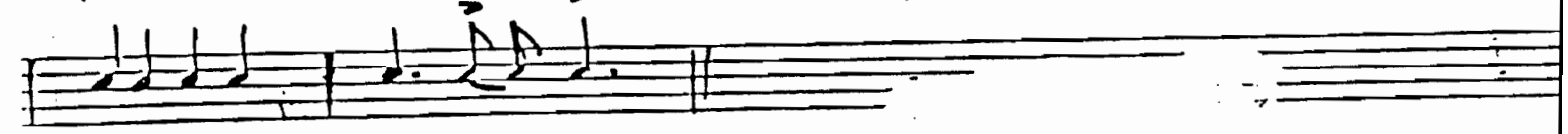
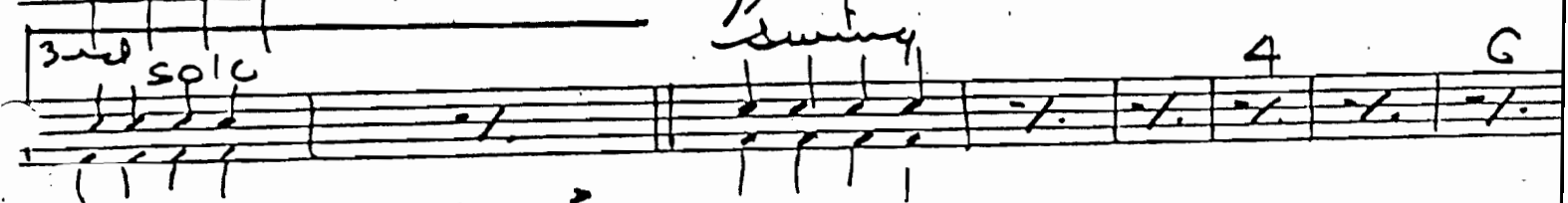


3rd solo

swing

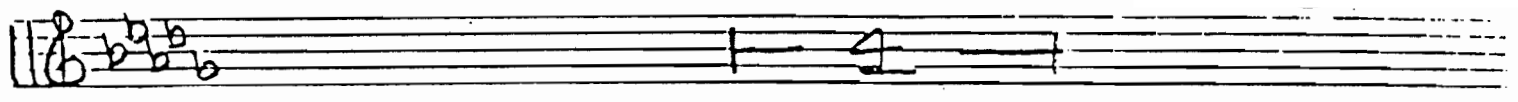
4

6



GUITAR

Don't Be That Way



A Db6 Bb-7 Eb-7 Ab+7 2 2

1st Db6 Eb-7 Ab+7 2nd Db6

B C7 F7 Bb7

Eb7 Ab+7 Db6 Bb-7 Eb-7 Ab+7 2

Db6 Bb-7 Eb-7 Ab+7 Db6 Db6

F6 F#o7 C7

C F6 D-7 G-7 C7 2 2

1st F6 G-7 C7 2nd F6

D E7 A7 D7

G7 C+7 F6 D-7 G-7 C7 2

F6 D-7 G-7 C7 F6 Bb-7 Eb7

GUITAR

E | Ab F-7 Bb-7 Eb7 2 2

Ab C [G] G7 G+7 C7

F7 F+7 Bb7 A7

H | D6 B-7 E-7 A+7 2 2

D6 B-7 E-7 A+7 2

D6 G6 D6

Don't Be That Way

PIANO

Don't Be That Way

Db6 Bb7 Eb-7 Ab+7

Handwritten musical notation for the first system, consisting of two staves (treble and bass clefs). The treble staff contains notes and rests, while the bass staff contains notes and rests. Above the staves, there are handwritten notes: Db6, Bb7, Eb-7, and Ab+7.

Db6 Bb-7 Eb-7 Ab+7

2

Handwritten musical notation for the second system, consisting of two staves (treble and bass clefs). The treble staff contains notes and rests, while the bass staff contains notes and rests. Above the staves, there are handwritten notes: Db6, Bb-7, Eb-7, and Ab+7. A '2' is written above the second measure of the treble staff.

1st Db6

2nd Eb-7 Ab+7

3rd Db6

4th Db6

Handwritten musical notation for the third system, consisting of two staves (treble and bass clefs). The treble staff contains notes and rests, while the bass staff contains notes and rests. Above the staves, there are handwritten notes: 1st Db6, 2nd Eb-7 Ab+7, 3rd Db6, and 4th Db6.

B C7

F7

Handwritten musical notation for the fourth system, consisting of two staves (treble and bass clefs). The treble staff contains notes and rests, while the bass staff contains notes and rests. Above the staves, there are handwritten notes: C7 and F7.

Bb7

Eb7

Ab+7

Handwritten musical notation for the fifth system, consisting of two staves (treble and bass clefs). The treble staff contains notes and rests, while the bass staff contains notes and rests. Above the staves, there are handwritten notes: Bb7, Eb7, and Ab+7.

Db6 Bb-7 Eb-7 Ab+7

2

Handwritten musical notation for the sixth system, consisting of two staves (treble and bass clefs). The treble staff contains notes and rests, while the bass staff contains notes and rests. Above the staves, there are handwritten notes: Db6, Bb-7, Eb-7, and Ab+7. A '2' is written above the second measure of the treble staff.

D♭♭ B♭-7 E♭-7 A♭+7 D♭♭

F6 F#dim7 C7 C7 clear solo

C

F6 D-7 G-7 C7

2

F6 D-7 G-7 C7

F6

G-7 C7

2nd F6

F6

D

E7

A7

D7

PIANO

Should Be That Way

G7

C+7

F6

D-7

G-7

C7

Musical staff with chords G7, C+7, F6, D-7, G-7, C7 and notes.

F6

D-7

G-7

C7

2

Musical staff with chords F6, D-7, G-7, C7 and notes.

F6

Bb-7

Eb7

E

Musical staff with chords F6, Bb-7, Eb7, E and notes.

Solo

F Ab6

F-7

Bb-7

Eb+7

Musical staff with chords F, Ab6, F-7, Bb-7, Eb+7 and notes.

Ab6

F-7

Bb-7

Eb+7

2

Musical staff with chords Ab6, F-7, Bb-7, Eb+7 and notes.

Ab6

Ab6

G

clar solo
G7

G+7

Musical staff with chords Ab6, Ab6, G, G7, G+7 and notes.

PIANO DON'T BE THATWAY

(4)

C7 C7 F7 E+7 -4-

Bb7 A7 [H] D6 B-7 E-7 A+7

D6 B-7 E-7 A+7 2

D6 G6 D6 2 D6

3rd D6 Drum Break [H] D6 B-7 E-7 A+7 2

D6 B-7 E-7 A+7 D6 G6 D6