

1ST TRP.

" DREAM "

Handwritten musical score for 1st Trumpet. The score is written on a single staff with a treble clef and a key signature of one sharp (F#). The music consists of several measures with various notes, rests, and articulations. Above the staff, there are several circled letters (A, B, C, D, E, G) and numbers (4, 2, 7, 2, 4, 5) indicating fingerings or techniques. Below the staff, there are markings such as "2nd MUTE", "p", "7 OPEN", and "cvc". The score ends with a double bar line and a fermata over the final note.

2ND TRP.

"DREAM"

Handwritten musical score for 2nd Trumpet part of "Dream". The score is written on a single staff with a key signature of one sharp (F#) and a common time signature (C). The music consists of several measures with various notes, rests, and articulations. Chord symbols A, B, C, D, E, F, G, and H are placed above the staff. Fingerings (e.g., 4, 2, 7, 5) and breath marks (e.g., + o) are indicated. Performance instructions include "ST. MUTE" and "7 OPEN". The score ends with a double bar line and a fermata.

Three empty musical staves, each consisting of five lines, provided for additional notation or rehearsal.

3RD. TRP.

" DREAM "

Handwritten musical score for 3rd Trumpet part of "Dream". The score is written on a grand staff with a treble clef and a key signature of one sharp (F#). The music is in 4/4 time. The score consists of eight staves of music. The first staff begins with a 4-measure rest, circled in red and labeled (A). The second staff has a 2-measure rest labeled "2 ST. MUTE" and a circled (B). The third staff has a 2-measure rest labeled (D) and a 4-measure rest. The fourth staff has a 2-measure rest labeled (E) and a 4-measure rest. The fifth staff has a 6-measure rest labeled (F) and a 6-measure rest. The sixth staff has a 5-measure rest labeled (G) and a 5-measure rest. The seventh staff has a 5-measure rest labeled (H) and a 5-measure rest. The eighth staff has a 5-measure rest labeled (I) and a 5-measure rest. The score includes various musical notations such as rests, notes, and accidentals. There are also some handwritten annotations like "7 OPEN" and "on eve".

4TH TRP. "DREAM"

4 (A) + o t + o t + o

2 ST. MUTE (B) 7 OPEN (C) + o + o

+ o 2 (D) 4 2

(E) - + o - + o

(F) 6 (G) #

o + o (H) 5

ov

1ST. TRB.

" DREAM "



2ND TRB.

"DREAM"

4 (A) 6 (B) 7

(C) +o +o 2 2 +o 3

(D) oo 2

(E) 2- 2

(F) (b) ^{unis}

(G)

(H) 5

o" o" ^{ove}

3RD. TRB.

"DREAM"

4 (A) 6 B 7

(C) + ° + ° 2 + ° 2

(D)

(E)

(E)(b) ^{unis}

(E)

(H) 5

1 2 ON cue 3

4TH TRB.

"DREAM"

Handwritten musical score for 4th Trumpet part of "Dream". The score is written on a single staff with a key signature of one flat (Bb) and a common time signature (C). The music is divided into measures by bar lines. Above the staff, there are circled letters A, B, C, D, E, and H, likely indicating rehearsal marks. The notes are mostly quarter and eighth notes, with some rests. There are also some markings like "4", "6", "7", "2", "3", "5" above the staff, possibly indicating fingerings or breath marks. The score ends with a double bar line and a fermata.

1ST ALTO

" DREAM "

4 (A)

(B) 8 (C) UNIS DIV.

(D) 4

(E) 6 sol

(F) 6 ENS.

(G) 4 (H) 5

" " DICTATED

2ND. ALTA

" DREAM "

4 (A)

(B) 8 (C) UNIS div.

(D) 4 (E) soli mf (F) 6

ENS. (G) 4 (H) 5 (I) 3

1ST. TENOR

"DREAM"

(FLUTE)

AD LIB SOLO INTRO
W/RHYTHM

Chords: G C⁷ A⁷ A^{b7} (A)^{NO}

2 TO FLUTE (B) SOLO BEHIND VOICE

Chords: G^{m7} B^{b7} E^{b9} F⁶ D^{m7}

Chords: G⁹ B^{m7(b5)} E⁹ 2 2 B^{m7} E⁹ 4 (D) G^{m7}

Chords: B^{b7} E^{b9} F⁶ A^{m7} D^{m7} 2 TO TENOR

(E) soli

Chords: (G) # 4 2 TO FLUTE

(H) Chords: G^{m7} B^{b7} E^{b9} F⁶ A^{m7} D^{m7} (D) // (D)''

2ND TENOR

DREAM II

Handwritten musical score for 2nd Tenor, titled "DREAM II". The score consists of 10 staves of music. The first staff is in G major (one sharp) and common time. It features various musical notations including rests, eighth notes, and chords. Chord symbols include A, B, C, D, E, and G. Fingerings are indicated by numbers 1-4. Dynamics like "pp" and "f" are present. The second staff continues the melody with notes and rests. The third staff includes a "D" chord and a "4" fingering. The fourth staff has an "E" chord with the annotation "SOLI MILIOR" and a complex rhythmic pattern. The fifth staff continues with notes and rests. The sixth staff features "E" and "G" chords with a "4" fingering. The seventh staff has notes and rests. The eighth staff includes "D" and "5" chords. The ninth staff has a "f" dynamic and a "D" annotation. The tenth staff is mostly empty with a few notes and rests.

STN. BARI "DREAM"

(CLAR.)

ON CLAR.

Handwritten musical score for Clarinet. The score consists of seven staves of music. The first staff begins with a treble clef, a key signature of one sharp (F#), and a 4/4 time signature. The music is written in a single melodic line with various notes, rests, and dynamic markings. Chord symbols (A, B, C, D, E, F) are written above the staff. A 'soliloquy' marking is present above the fifth staff. The score ends with a double bar line and a repeat sign.

Four empty musical staves, each consisting of five lines, provided for additional notation or accompaniment.

VOCAL GROUP

"DREAM"

4 (A)

DREAM - WHEN YOU'RE POOL-IN BLUE - DREAM - THAT'S THE THING TO

(B) SOLO

DO - JUST - WATCH THE SMOKE RINGS RISE IN THE AIR

(C) G 5

YOU'LL FIND YOUR SHARE OF MEM - OR - RIES THERE SO DREAM

WHEN THE DAY IS THROUGH - DREAM - AND THEY MIGHT COME TRUE

(D) SOLO

THINGS - NOV-ER ARE AS BAD AS THEY SEEM SO DREAM

DREAM

Handwritten musical notation for guitar and bass. The guitar part (top staff) features a melody with notes and rests, and a chord progression of E8 and F8. The bass part (bottom staff) provides a rhythmic accompaniment. The lyrics "DREAM" are written under the first two measures, and "D.S. to C of Coda" is written at the end of the section.

Handwritten musical notation for a vocal melody. The melody is written on a single staff with notes and rests. The lyrics "DREAM" are repeated under the notes. There are also some handwritten markings above the notes, possibly indicating phrasing or dynamics.

VOCAL GROUP

Four empty musical staves, likely intended for a vocal group or choir.

PIANO "DREAM"

Handwritten musical score for piano titled "DREAM". The score is written on ten staves. The first staff is marked "TENOR SOLO" and "VOCAL CUE". The music is in a key signature of one flat (Bb) and 4/4 time. The score includes various chords and melodic lines. Key features include:

- Staff 1: Tenor solo with notes and chords F, Bb7, G7, Fb7, and a circled section A with F6.
- Staff 2: Chords Bm, E7, E7(b5), F6, Am7, D7(b9), D7(b9).
- Staff 3: Circled section B with chords Gm7, Bb7, Eb9, F6, Dm7, G9.
- Staff 4: Chords Bm7(b5), E9, Bb7, Am7, Ab13, Gm7, C13(b9), and a circled section C with F6.
- Staff 5: Chords F6, Bm, E9, F6, Am7.
- Staff 6: Chords D7(b9), D7(b9), circled section D with Gm7, Bb7, Eb9, F6, Am7, Dm7.
- Staff 7: Chords Gm7, C13(b9), F6, Abm7, Db9, circled section E with Gb6.
- Staff 8: Chords Cm, F7, Gb6, Bb7, Eb7(b9), circled section F with Am7.
- Staff 9: Chords Bm7, E9, Fb6, Bb7, Em7, Ab9, Cm7(b5), F9, Abm, Am7.
- Staff 10: Chords C13, C13(b9), circled section G with F6, Bm, E9, F6.

DREAM

Handwritten musical notation for the first system of "DREAM". It consists of three staves. The top staff has a key signature of one flat (Bb) and contains notes with chords F6, Am7, D7(b9)/D7(b9)(N), Gm7, Bb7, and Eb9. The middle staff has notes with chords F6, Am7, Dm7, Gm7, Gm9, and C13(b9). The bottom staff has notes with a chord F6. There are double bar lines at the end of the first and second staves.

PIANO

BASS

"DREAM"

F B^{b7} G⁷ G^{b7} (A)

(B)

(C)

(D)

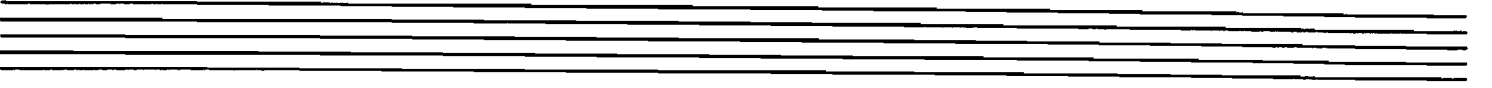
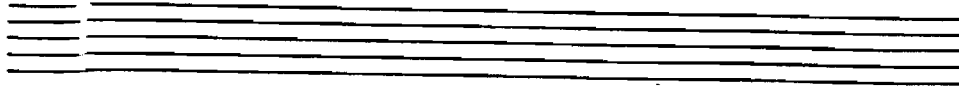
(E)

(F)

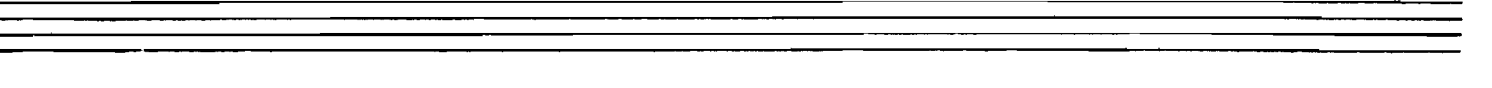
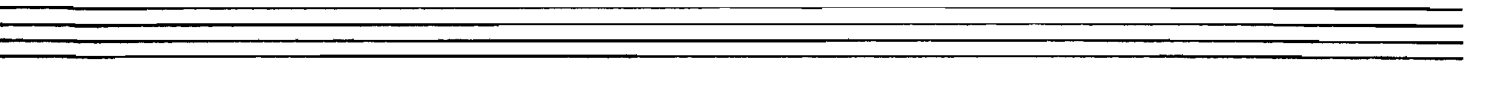
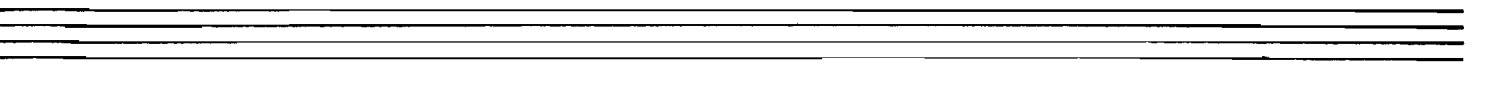
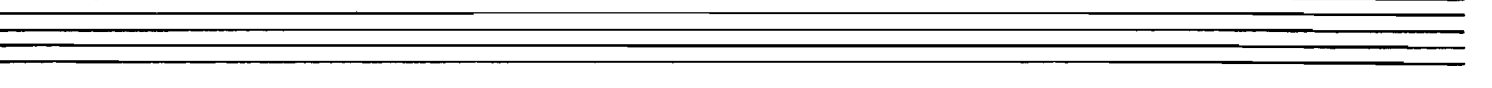
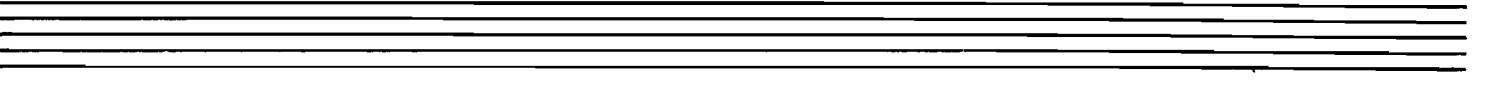
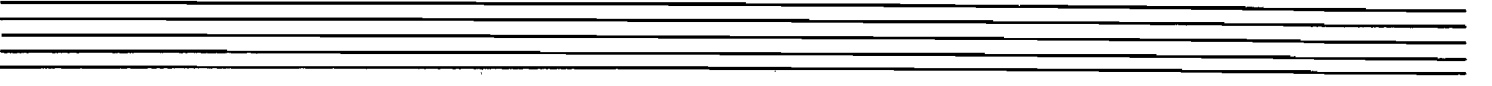
(G)

DREAM

- 2 -



BASS



GUITAR "DREAM"

TENOR SOLO INTRIO VOCAL CUE

F B^{b7} G⁷ F^{b7} (A) F⁶

B^m E⁷ E^{7(b5)} F⁶ A^{m7} D^{7(b9)} D^{7(b9)}

(B) G^{m7} B^{b7} E^{b9} F⁶ D^{m7} G⁹

B^{m7(b5)} E⁹ B^{b7} A^{m7} A^{b13} G^{m7} C^{13(b9)} (C) F⁶

F⁶ B^m E⁹ F⁶ A^{m7}

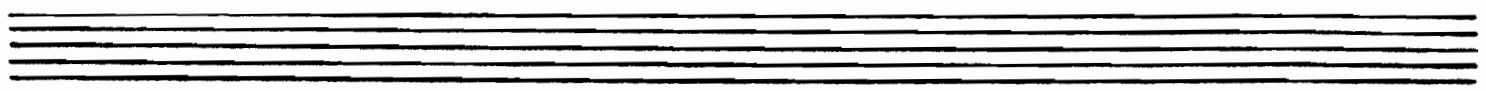
D^{7(b9)} D^{7(b9)} (D) G^{m7} B^{b7} E^{b9} F⁶ A^{m7} D^{m7}

G^{m7} C^{13(b9)} F⁶ A^{b7} D^{b9} (E) G^{b6}

C^m F⁷ G^{b6} B^{b7} E^{b7(b9)} (F) A^{b7}

B^{m7} E⁹ F^{b6} B^{b7} E^{m7} A^{b9} C^{m7(b5)} F⁹ A^m A^{m7}

C¹³ C^{13(b9)} (G) F⁶ B^m E⁹ F⁶



DREAM

2 -

Handwritten musical notation for guitar, consisting of three staves. The first staff contains the following chords: F6, Am7, D7(b9)/D7(b9)(N), Gm7, Bbm7, and Eb9. The second staff contains: F6, Am7, Dm7, Gm7, Gm9, and C13(b9). The third staff contains: F6. The notation includes notes, rests, and double bar lines.

GUITAR

DRUMS

"DREAM"

BRUSHES

Handwritten musical notation for drums using brushes, organized into measures A through H. The notation includes rhythmic patterns, rests, and specific counts.

- Measure A:** Labeled "TENOR" and "VOCAL". It shows a rhythmic pattern of four eighth notes followed by a wavy line and the text "3 MORE".
- Measure B:** Shows a rhythmic pattern of four eighth notes followed by a wavy line and "5 MORE", then another rhythmic pattern of four eighth notes.
- Measure C:** Shows a rhythmic pattern of four eighth notes followed by a wavy line and "7 MORE", then another rhythmic pattern of four eighth notes.
- Measure D:** Shows a rhythmic pattern of four eighth notes followed by a wavy line and "7 MORE".
- Measure E:** Shows a rhythmic pattern of four eighth notes followed by a wavy line and "7 MORE", then another rhythmic pattern of four eighth notes.
- Measure F:** Shows a rhythmic pattern of four eighth notes followed by a wavy line and "7 MORE".
- Measure G:** Labeled "VOCAL". It shows a rhythmic pattern of four eighth notes followed by a wavy line and "7 MORE".
- Measure H:** Shows a rhythmic pattern of four eighth notes followed by a wavy line and "7 MORE".

Below the main notation, there are several staves with notes and rests, some with circled notes and double lines underneath, possibly indicating specific drum sounds or techniques.