

PIANO VOCAL  
Gtr.

2595

DIANE SCHUUR

UNTIL I MET YOU

(extra part)

Arr. Chico O'Farrill

MED. ♩ = 152

(PIANO INTRO) (A)

I USED TO BE SO FANCY FREE BUT REALLY AS CAN BE TILL ONE LUCKY DAY

*LONG SOME*

$Cm^7$   $Cm^7/F$   $E9$   $BbMA7$   $E9$

YOU CAME MY WAY I NEVER KNEW WHAT LOVE WAS ALL ABOUT UN-TIL I MET YOU

$Dm9$   $G7+5$   $Cm^7$   $Cm^7/F$   $B7/F$

(B)

I USED TO THINK NEVER BE A BOY WHO'D EV-R CARE FOR ME AND

$Bb6$   $F7+5$   $Bb9$   $A9$   $A9$   $G9$   $Cm^7$   $Cm^7/F$   $F9$

WHAT DO YOU KNOW — YOU MADE IT SO — I NEVER KNEW WHAT LOVE

B<sup>b</sup>MA7 Eb9 Dm9 G7+5 Cm7

ALL ABOUT UNTILL I MET YOU — WHEN YOU KISSED

Cm<sup>7</sup>/F B<sup>7</sup>/F Bb6 A7+5 Ab9 Gm7

(C)

ME — I — FEEL THE CHANGE WINTER TO SPRING — WHEN YOU KISSED

SEASONS FROM

Fm7 Bb9 Fm7 Bb9 EbMA7 Eb6 Cm7

ME — I — LOST MY REASON I HEARD THE BIRDS SING — LOVE WAS THE THING AND

'CAUSE

Gm7 C9 F9 Gb9 Cm<sup>7</sup>/F F9

(D)

NOW I TRY TO RUB MY EYES EACH TIME I TRY TO RE-A-LIZE THAT YOUR LOVE IS MINE

$Cm^7$   $Cm^7/F$   $F^9$   $Bbma^7$   $Eb^9$

AIN'T IT JUST FINE I NEVER KNEW WHAT ALL A-BOUT UN-TILL I MET YOU

$Dm^9$   $G^7+5$   $Cm^7$   $Cm^7/F$   $B^7/F$

cut

(E)

SINCE I FOUND YOU I FEEL THE EN-

$Bb^6$   $Bm^7$   $Cm^7$   $Dm^7$   $G^7+5$   $Cm^7$   $C^7+5$   $Cm^7/F$   $F^9$

TI-RE UN-I-VERSE REEL I NEVER KNEW WHAT LOVE WAS

$Dm^7$   $Ab^9$   $Dm^7/G$   $G^7+5$   $Cm^7$

ALL A-BOUT UN-TIL I MET YOU \_\_\_\_\_ I'M THE HAP-

$Cm^7/F$   $B^7/F$   $Bb6$   $F7+5$   $Dm7b5$   $G7+5$

(F) P-I-EST GIRL \_\_\_\_\_ 'CAUSE YOU'DE GOT MY HEAD IN A WHIRL \_\_\_\_\_

$Cm^7$   $C7+5$   $Cm^7/F$   $F9$   $Dm^7$   $A69$   $Dm^7/B$   $G7+5$

cut

I NEV-ER KNEW WHAT ALL A-BOUT UN-TIL I MET YOU \_\_\_\_\_

$Cm^7$  LOVE WAS  $Cm^7/F$   $B^7/F$   $Bb6$   $Eb6$   $E0$   $B^b/F$   $Gm^7$   $Fm^7$

(G) BAND SOLO

$(Fm^7)$   $Bb9$   $Fm^7$   $Fm^7/Bb$   $E9$   $Eb6$   $D6$   $Eb6$   $Cm$   $Cm/Bb$   $Am^7$   $D7b9$

Handwritten musical notation for the first system. The top staff is a vocal line with a treble clef and a key signature of two flats (Bb, Eb). The bottom staff is a guitar accompaniment line with a bass clef. The chords written below the guitar staff are: Gm7, C9, Gm7, C9, Gb9, F9, E9, F9, Cm7, Bm7/E, Cm7/F, and F9. The word "AND" is written above the final two measures.

(H)

Handwritten musical notation for the second system. The top staff contains the lyrics: "NOW I TRY TO RUB MY EYES EACH TIME I TRY TO RE-A-IZE THAT YOUR LOVE IS MINE". The bottom staff shows guitar chords: Cm7, Cm7/F, F9, BbMA7, and Eb9.

Handwritten musical notation for the third system. The top staff contains the lyrics: "AIN'T IT JUST FINE" and "I NEV-ER KNEW WHAT LOVE WAS ALL A-BOUT UN-TIL I MET YOU". The bottom staff shows guitar chords: Dm7, G7+5, Cm7, Cm7/F, and B7/F.

Handwritten musical notation for the fourth system. The top staff contains the lyrics: "SINCE I FOUND". The bottom staff shows guitar chords: Bb6, Ab, Bb6, Em7b5, and A7+5.

I

YOU I FEEL — THE EN. TI. RE UN- I. VERSE REEL —

Dm7 D7+5 Dm7/G G9 Em7 Bb9 Em7/A A7+5

I NEVER KNEW — (ETC.) I'M THE MAD.

Dm7 Dm7/G Db/G C6 G7+5 Em7/B5 A7+5

J

PI - EST GIRL — ' CAUSE YOU'VE GOT MY HEAD IN A WHIRL —

Dm7 D7+5 Dm7/G G9 Em7 Bb9

I NEU. ER KNEW (ETC.)

Em7/A A7+5 Dm7 Dm7/G Db/G

1.

I NEVER KNEW. (ETC) —

C<sup>9</sup> B<sup>b</sup>9 E<sup>m</sup><sub>7</sub>/A A<sub>7</sub>+5 D<sup>m</sup>7 D<sup>m</sup><sub>7</sub>/G D<sup>b</sup><sub>7</sub>/G

1<sup>ST</sup> x MF - 2<sup>ND</sup> x P

2.

ALL ABOUT (ETC) —

D<sup>m</sup><sub>7</sub>/G D<sup>b</sup><sub>7</sub>/G C<sup>6</sup> SOLO C<sup>M</sup>A<sup>7</sup>

2595

UNTIL I MET YOU

Arr. Chico O'Farrill

MED. ♩ = 152

A

B

(PIANO INTRO)

B

Musical notation for section B, consisting of three staves of music in 4/4 time with a key signature of one sharp (F#). The first staff contains four measures of music, the second staff contains four measures, and the third staff contains four measures. The notation includes quarter notes, eighth notes, and beamed eighth notes, with some notes tied across measures.

C

2

Musical notation for section C, consisting of two staves of music in 4/4 time with a key signature of one sharp (F#). The first staff contains four measures, and the second staff contains four measures. The notation includes quarter notes, eighth notes, and beamed eighth notes, with some notes tied across measures.



(D) 2

2 Cut to

(E)

2

(F)

2 Play

(G)

2

(H) 2

3

(I)

2

(J)

2

1<sup>st</sup> MS - 2<sup>ND</sup> P

(1.)

2. 2

2595

UNTIL I MET YOU

Arr. Chico O'Farrill

MED. ♩ = 152

A

B

(PIANO INTRO)

B

C

2

(D) 2

Handwritten musical notation for measure D. It begins with a circled 'D' and a key signature of one sharp (F#). A '2' is written above the staff. The notation includes a whole rest, followed by quarter notes G4, A4, and B4, and a dotted quarter note C5.

2

Handwritten musical notation for measure E. It starts with a '2' above the staff. The notation includes a whole rest, followed by quarter notes D5, E5, and F#5, and a dotted quarter note G5. There are some scribbles and a double bar line in the middle of the staff.

(E)

Handwritten musical notation for measure F. It begins with a circled 'E'. The notation includes quarter notes G4, A4, B4, and C5, followed by a dotted quarter note D5 and a quarter note E5.

2

Handwritten musical notation for measure G. It starts with a '2' above the staff. The notation includes quarter notes F#4, G4, A4, and B4, followed by a dotted quarter note C5 and a quarter note D5.

(F)

Handwritten musical notation for measure H. It begins with a circled 'F'. The notation includes quarter notes E5, D5, C5, and B4, followed by a dotted quarter note A4 and a quarter note G4.

2

Handwritten musical notation for measure I. It starts with a '2' above the staff. The notation includes a whole rest, followed by quarter notes F4, E4, and D4, and a dotted quarter note C4. There are some scribbles and a double bar line in the middle of the staff.

(G)

Handwritten musical notation for measure J. It begins with a circled 'G'. The notation includes quarter notes B3, A3, and G3, followed by a dotted quarter note F3 and a quarter note E3. There is a fermata over the first two notes.

Handwritten musical notation for measure K. The notation includes quarter notes D3, C3, and B2, followed by a dotted quarter note A2 and a quarter note G2. There is a fermata over the first two notes.

(H) 2

3

(I)

2

(J)

2

1<sup>st</sup> MS - 2<sup>ND</sup> P

(1.)

(2.) 2

TENOR SAX - 

DIANE SCHUUR

2595

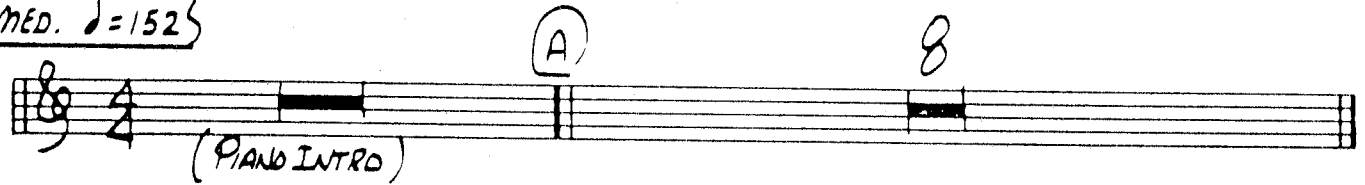
# UNTIL I MET YOU

Arr. Chico O'Farrill

MED. ♩ = 152

(PIANO INTRO)

A 8



B



C 2



**D**

2

Musical staff for measure D, starting with a circled 'D' and a '2' above the staff. The staff contains a whole rest followed by a series of eighth and quarter notes.

2

(cut 2 BAR before **E**)

Musical staff for measure E, starting with a '2' above the staff. A handwritten note in parentheses says '(cut 2 BAR before E)'. The staff contains eighth and quarter notes.

**E**

Musical staff for measure E, starting with a circled 'E'. The staff contains eighth and quarter notes with accents.

2

Musical staff for measure F, starting with a '2' above the staff. The staff contains eighth and quarter notes with accents.

**F**

Musical staff for measure F, starting with a circled 'F'. The staff contains eighth and quarter notes with accents.

2 **F**

(PLAY HERE)

Musical staff for measure G, starting with a '2' and a circled 'F' above the staff. A handwritten note in parentheses says '(PLAY HERE)'. The staff contains a whole rest followed by eighth and quarter notes.

**G**

Musical staff for measure G, starting with a circled 'G'. The staff contains eighth and quarter notes with accents.

Musical staff for measure H, containing eighth and quarter notes with accents.

(H) 2

3

(I)

2

(J)

2

1<sup>st</sup> MS. 2NDX 2

(1.)

2.

2



TENOR SAX - 2

DIANE SCHUUR

2595

# UNTIL I MET YOU

Arr. Chico O'Farrill

MED.  $\text{♩} = 152$

Vocal  
1/4

(A)

8

(PIANO INTRO)

(B)

(C) 2

**D**

**D**

**E**

**E**

**F**

**F**

**G**

**G**

(H) 2

3

(I)

2

(J)

2

1<sup>st</sup> MS - 2<sup>ND</sup> P

2.

2

4

2595

UNTIL I MET YOU

Arr. Chico O'Farrill

MED. ♩ = 152

4 A 8

(PIANO INTRO)

B

C 2

①

2

2

②

3

3

③

3

3

④

3

3

(H) 2

A musical staff for Horn (H) in G major. It begins with a first ending bracket labeled '2' covering the first two measures. The melody continues with eighth and quarter notes.

3

A musical staff for Horn (H) in G major. It begins with a first ending bracket labeled '3' covering the first two measures. The melody continues with eighth and quarter notes.

(I)

A musical staff for Horn (I) in G major. It begins with a first ending bracket labeled '3' covering the first two measures. The melody continues with eighth and quarter notes, including accents.

3

A musical staff for Horn (I) in G major. It begins with a first ending bracket labeled '3' covering the first two measures. The melody continues with eighth and quarter notes.

(J)

A musical staff for Horn (J) in G major. It begins with a first ending bracket labeled '2' covering the first two measures. The melody continues with eighth and quarter notes, including accents.

2

A musical staff for Horn (J) in G major. It begins with a first ending bracket labeled '2' covering the first two measures. The melody continues with eighth and quarter notes.

1<sup>st</sup> MS - 2<sup>ND</sup> P

1.

A musical staff for the first measure of the second part. It begins with a first ending bracket labeled '1.' covering the first two measures. The melody continues with eighth and quarter notes.

2.

2

A musical staff for the second measure. It begins with a first ending bracket labeled '2.' covering the first two measures. The melody continues with eighth and quarter notes.

2595

UNTIL I MET YOU

Arr. Chico O'Farrill

(MED. ♩ = 152)

BUCKET MUTE

(A) 6

(Piano Intro)

(B) 6

(C) 2

3

OPENS

(D) 6

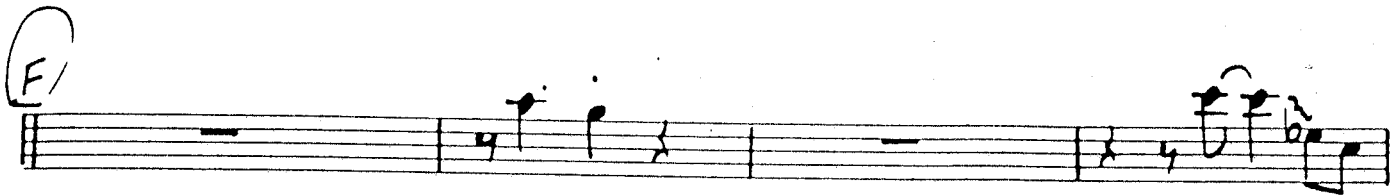
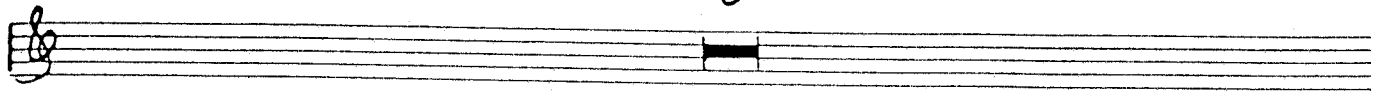
V.S. ↗

Trpt. 1

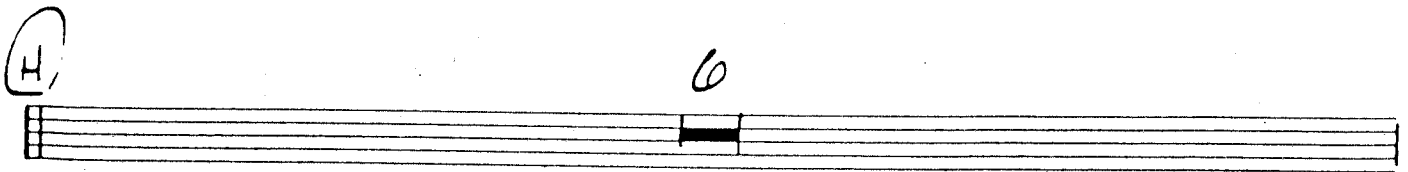
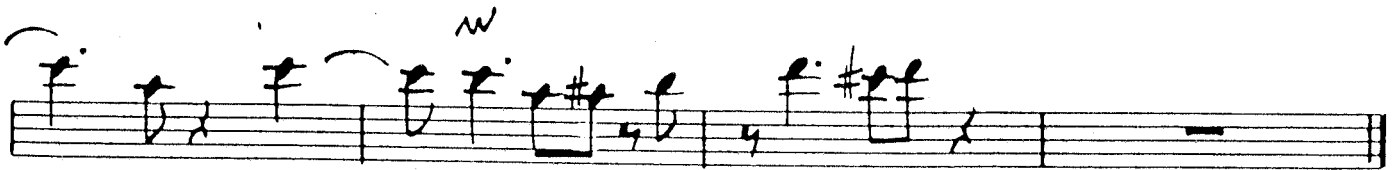
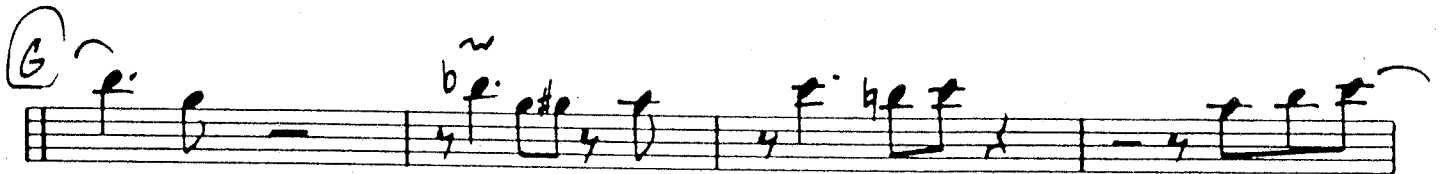
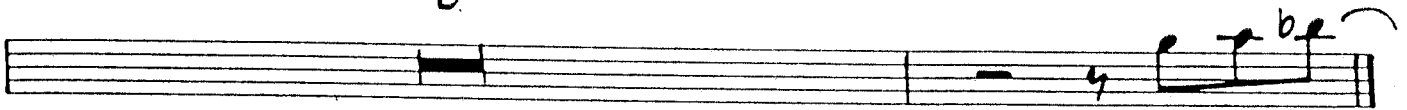
2

UNTIL I MET YOU.

8



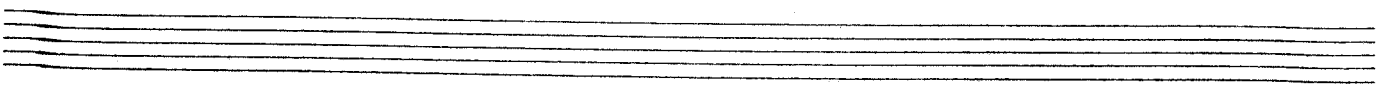
3



6



v.s.





Tpt. 1

3

"UNTIL I MET YOU"

(I)

(J)

123 4

TRUMPET - 2

DIANE SCHUUR

2595

UNTIL I MET YOU

Arr. Chico O'Farrill

(MED. ♩ = 152)

BUCKET MUTES

4 (A) *Voicé 6*

(PIANO INTRO)

(B) 6

(C) 2

3

OPENS

(D) 6

TRA. 2

2.

UNTIL I MET YOU.

Handwritten musical notation for systems E and F. System E is a single staff with a circled 'E' and a bar line with the number '8' above it. System F is a single staff with a circled 'F' and musical notes. A large scribble is present over both systems.

A bracket labeled 'CUT' spans the first two systems. The first system contains a circled '2' and a bar line. The second system contains musical notes.

Handwritten musical notation for system G, starting with a circled 'G' and containing musical notes with a fermata over the first note.

Handwritten musical notation for system H, containing musical notes with a fermata over the first note.

Handwritten musical notation for system I, starting with a circled 'H' and a bar line with the number '6' above it.

Handwritten musical notation for system J, containing musical notes with a fermata over the first note. Below the staff is a large handwritten 'N'.

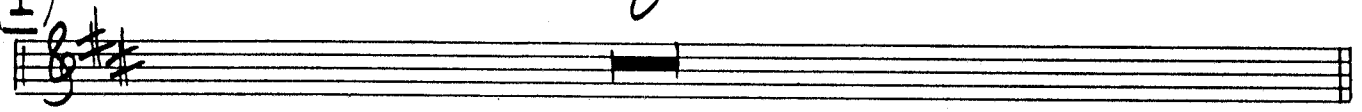
TRAIL 2

3.

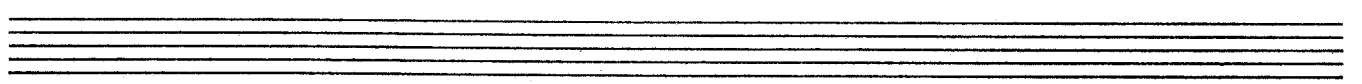
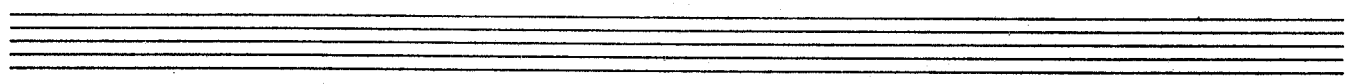
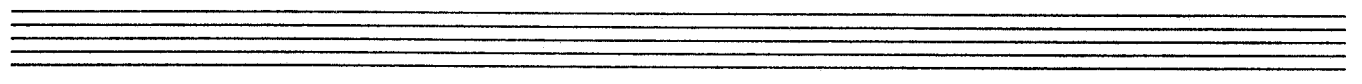
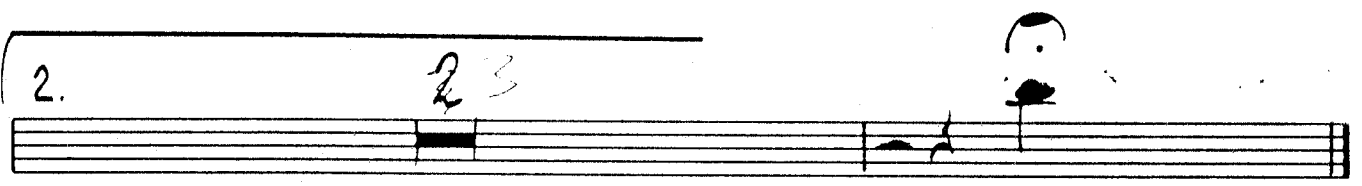
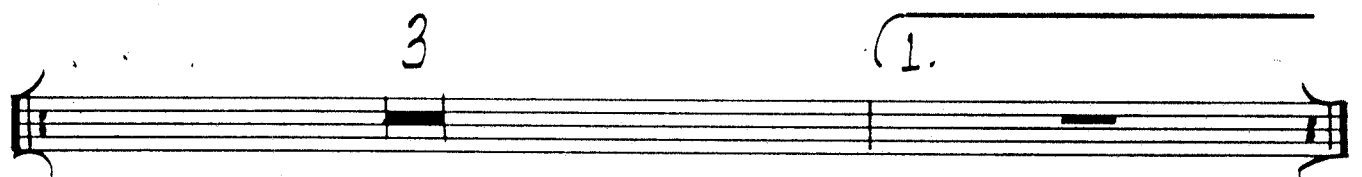
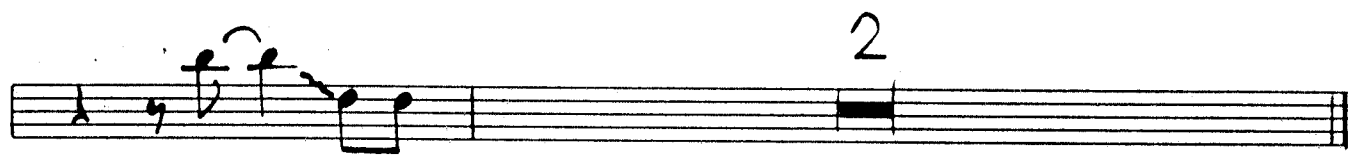
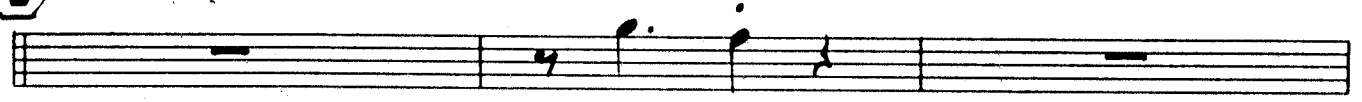
'UNTIL I MET YOU'

I

8



J



TRUMPET- 3

2595

UNTIL I MET YOU

Arr. Chico O'Farrill

(MED. ♩ = 152)

BUCKET MUTE

(A) VOCAL

4

(PIANO INTRO)

(B) 6

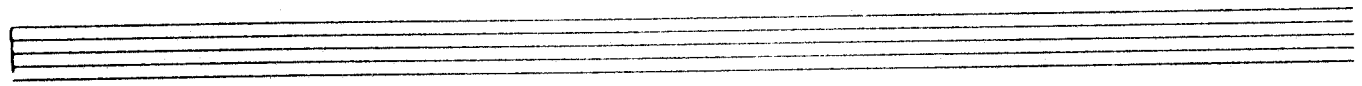
(C) 2

3

OPENS

(D) 6

v.s. ↗



# Trpt. 3

2

UNTIL I MET YOU

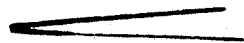
**E** 8

**F**

3

**G**

**H** 6



v.s.

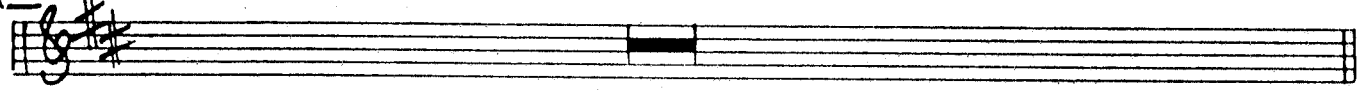
Trot 3

3

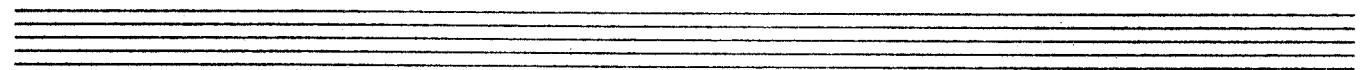
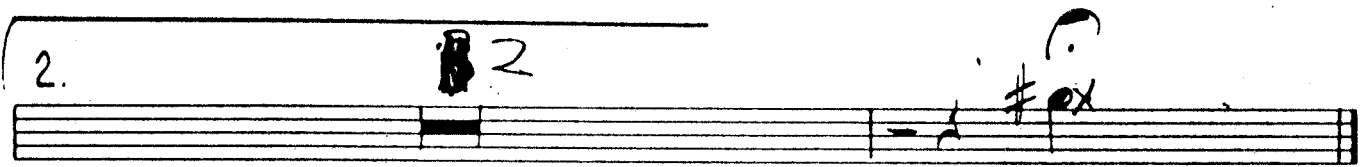
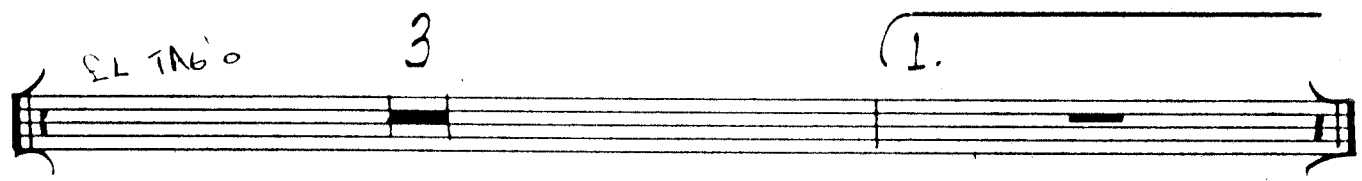
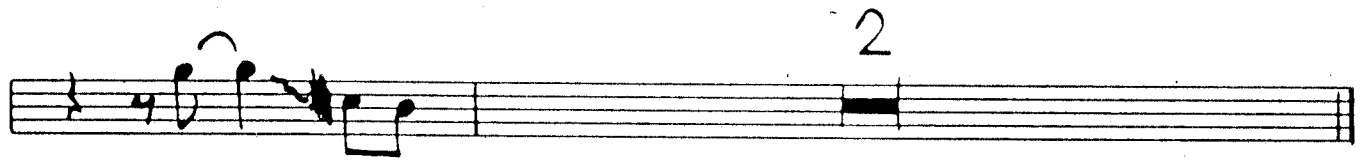
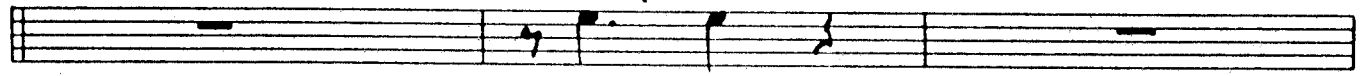
'UNTIL I MET YOU"

I

8



J



TRUMPET - 4

2595

UNTIL I MET YOU

Arr. Chico O'Farrill

(MED. ♩ = 152)

BUCKET MUTED

4 BARS PIANO (A) VOCAL 6

(PIANO INTRO)

(B) 6

(C) 2

3 OPEN

(D) 6

v.s.



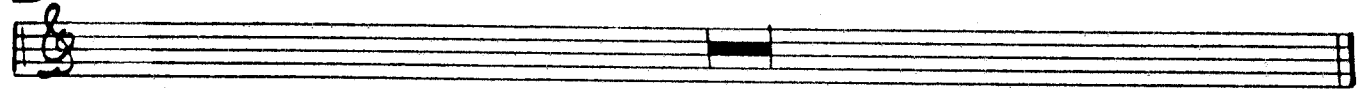
Trot 4

2

UNTIL I MET YOU.

E

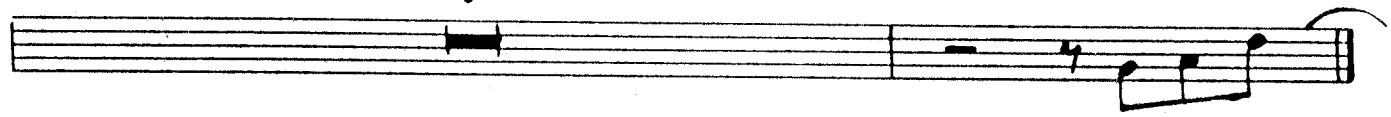
8



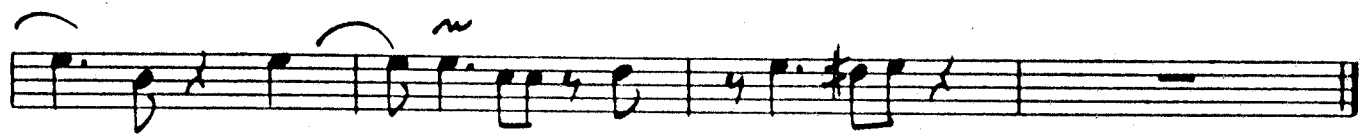
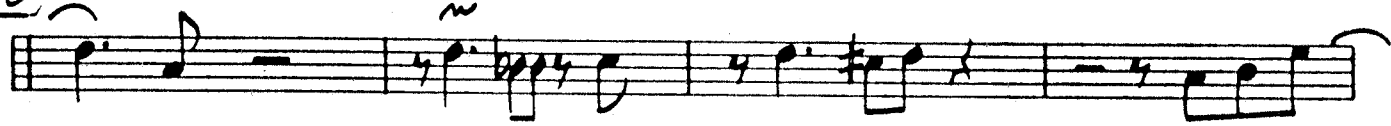
F



3

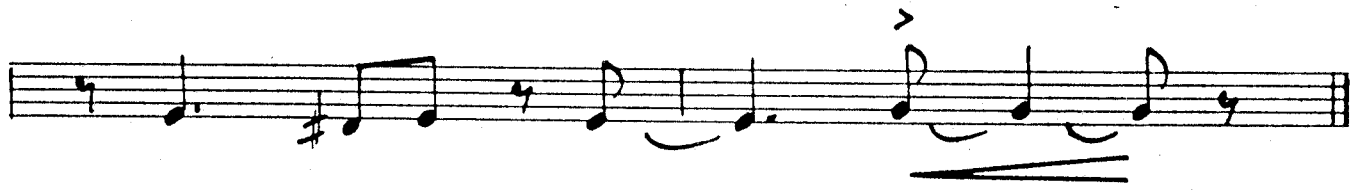
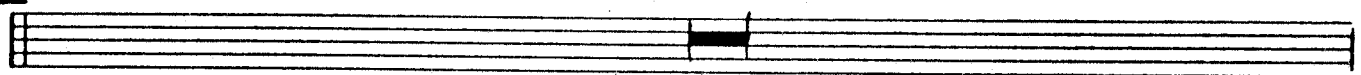


G



H

6



# Trot. 4

3

'UNTIL I MET YOU'

I

8

Musical staff with treble clef, key signature of two sharps (F# and C#), and a whole rest.

J

Musical staff with a whole rest.

Musical staff with a melodic line and a measure rest labeled '2'.

Musical staff with a measure rest labeled '3' and a first ending bracket labeled '1.'.

Musical staff with a second ending bracket labeled '2.', a measure rest labeled '2', and a melodic line with handwritten notes '1 1 1 4' above it.

Empty musical staff.

Empty musical staff.

Empty musical staff.

TROMBONE - 1

DIANE SCHUUR

2595

# UNTIL I MET YOU

Arr. Chico O'Farrill

(MED. ♩ = 152)

BUCKET MUTES

4

(A) 6

(Piano Intro)

(B) 6

(C) 2

3

OPENS.

(D) 6

(E) 4

A musical staff containing a sequence of notes: G4, A4, B4, C5, B4, A4, G4, F4, E4, D4, C4. There are various accidentals including flats and sharps.

(F)

A musical staff starting with a circled 'F' indicating a chord. It contains several chords and notes, including a triplet of eighth notes at the end.

A musical staff with notes and accidentals, including a flat and a sharp, ending with a triplet of eighth notes.

(G)

A musical staff starting with a circled 'G' indicating a chord. It features several chords and notes, including a triplet of eighth notes.

A musical staff with chords and notes, including a triplet of eighth notes.

(H)

A musical staff with a circled 'H' and a whole rest symbol in the center, indicating a 4-measure rest.

A musical staff with notes and accidentals, including a flat and a sharp, ending with a triplet of eighth notes.

(I)

A musical staff with a circled 'I' and a whole rest symbol in the center, indicating a 4-measure rest.

Handwritten musical notation for TBN. 1, first staff. It features a treble clef, a key signature of one flat (B-flat), and a 4/4 time signature. The melody consists of quarter and eighth notes with various accidentals (sharps, flats, naturals).

Handwritten musical notation for TBN. 1, second staff. It begins with a circled 'J' in the first measure. The notation includes quarter notes and rests.

Handwritten musical notation for TBN. 1, third staff. It shows a sequence of four beamed eighth notes, followed by a measure with a '2' above it and a whole note.

Handwritten musical notation for TBN. 1, fourth staff. It features a measure with a '3' above it and a whole note, followed by a measure with a '1.' above it and a whole note.

Handwritten musical notation for TBN. 1, fifth staff. It features a measure with a '2.' above it and a whole note, followed by a measure with a '2' above it and a whole note, and a final measure with a circled 'C' above it and a whole note.

A blank musical staff.

A blank musical staff.

A blank musical staff.

2595

UNTIL I MET YOU

Arr. Chico O'Farrill

(MED. ♩ = 152)

BUCKET MUTES

A-1 (A) 6  
(PIANO INTRO)

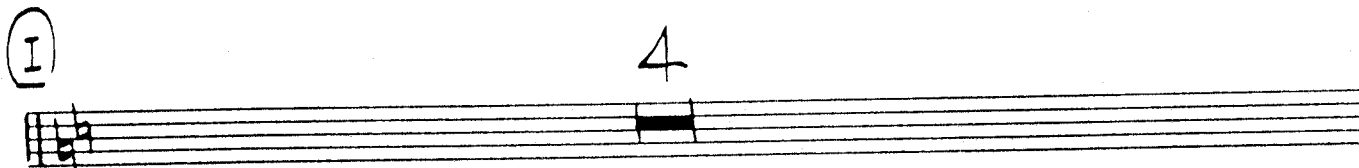
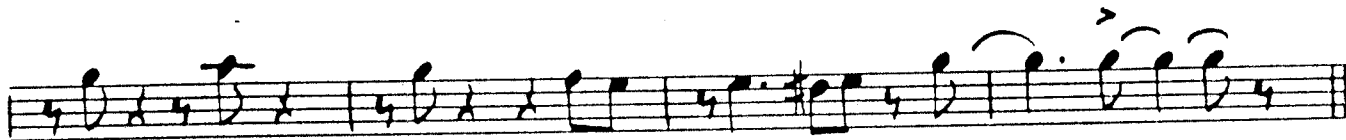
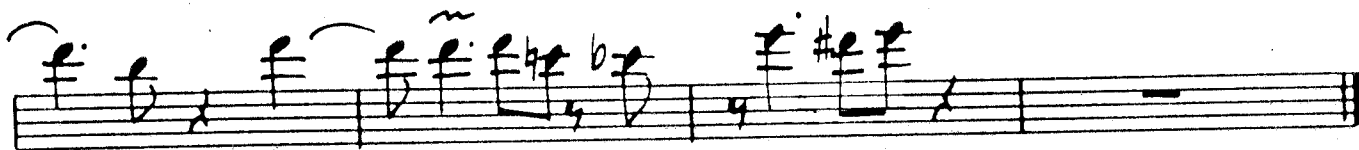
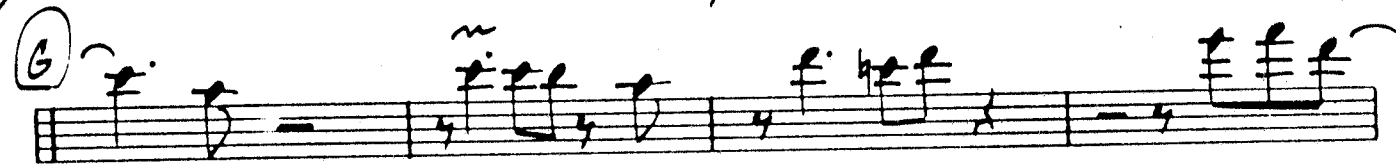
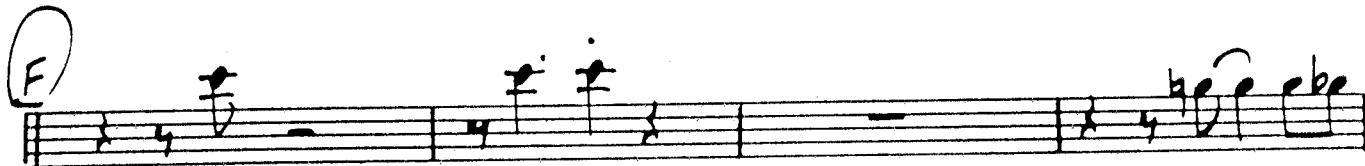
B 6

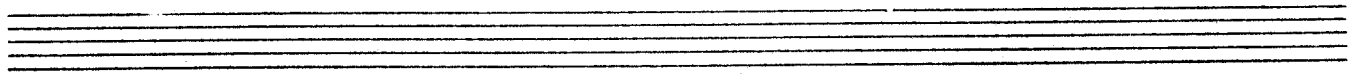
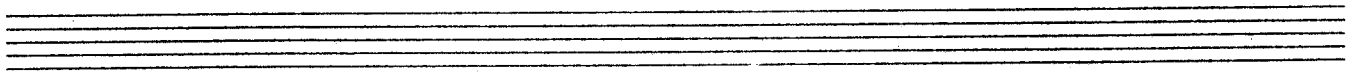
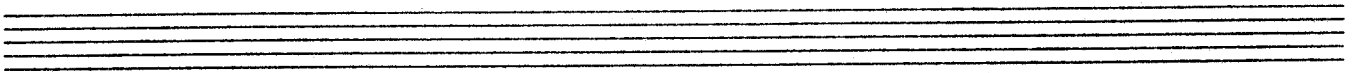
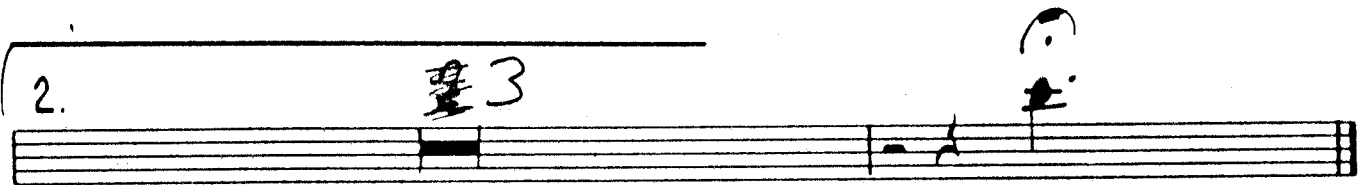
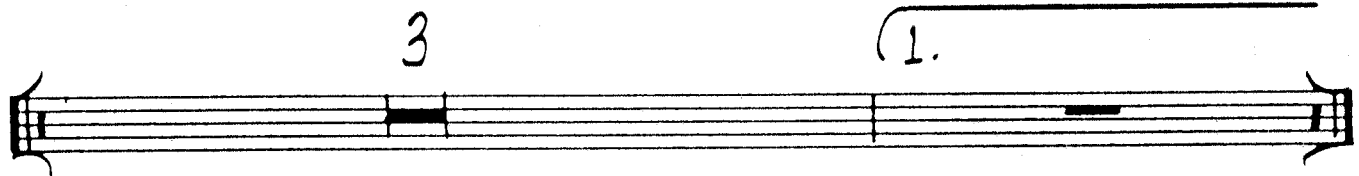
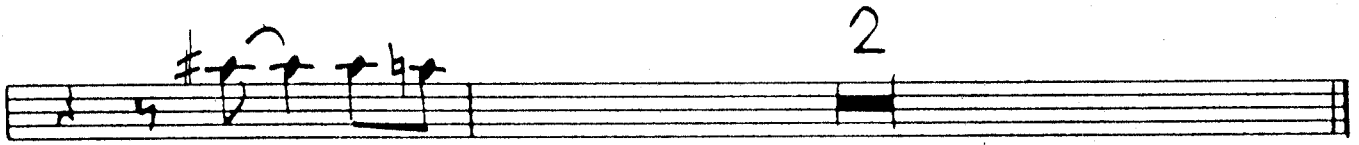
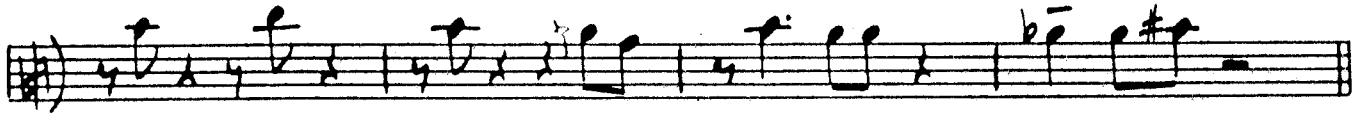
C 2

3 OPENS

D 6 2. Position

E 4







2595

UNTIL I MET YOU

Arr. Chico O'Farrill

(MED. ♩ = 152)

BUCKET MUTES

4

(A) 6

(PIANO INTRO)

(B) 6

(C) 2

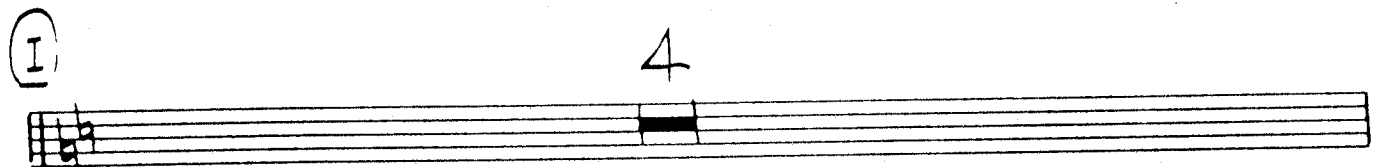
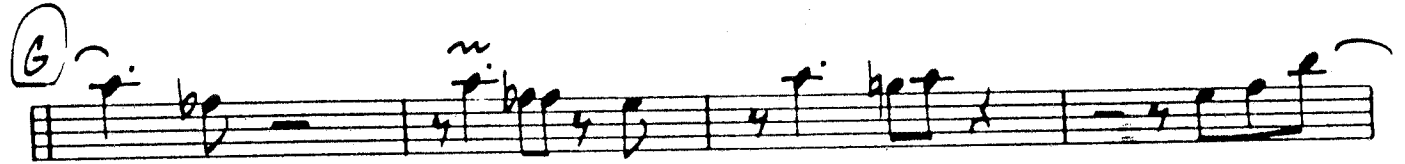
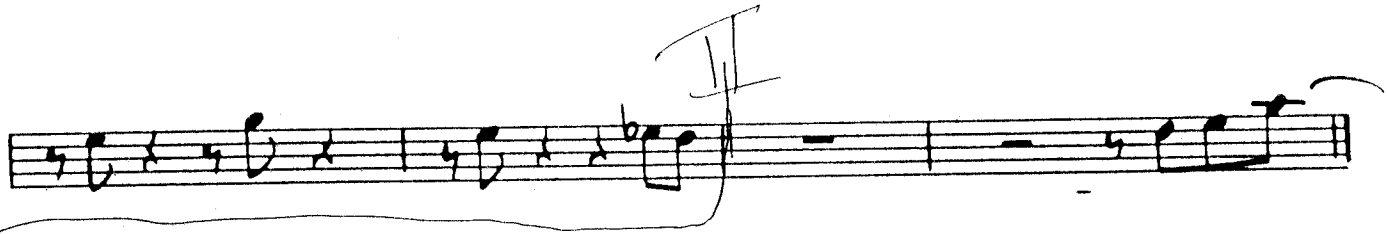
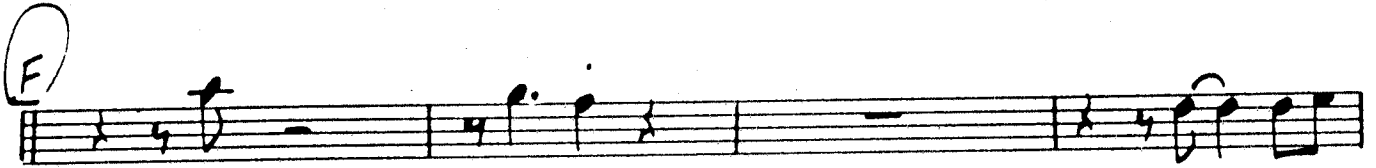
3

OPENS

(D) 6

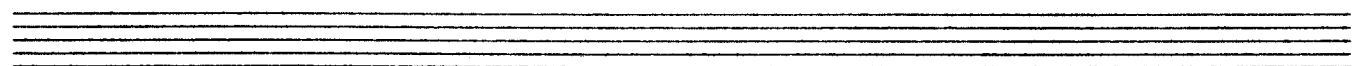
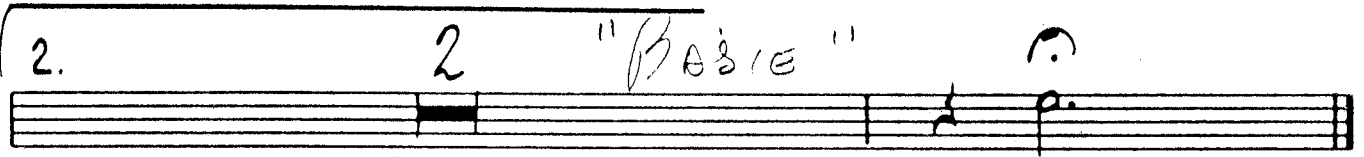
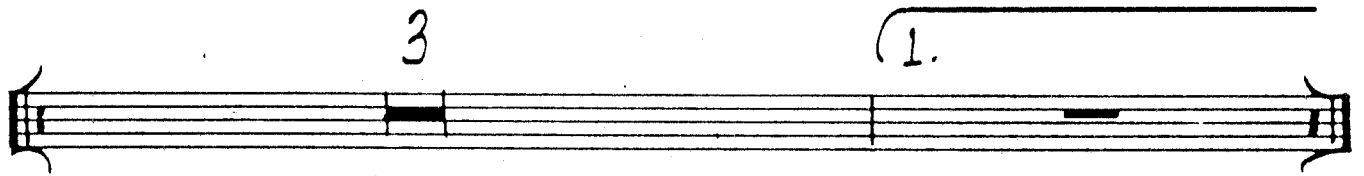
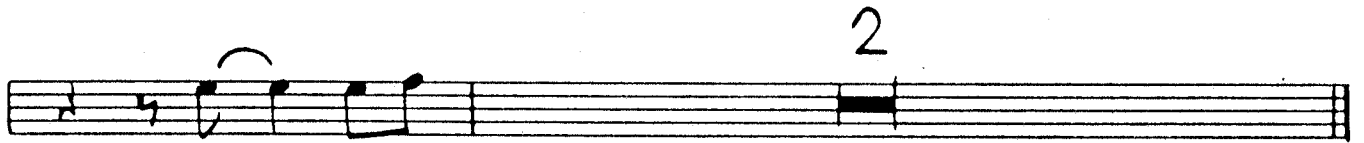
cut.

(E) 4





(J) *Pray*



TROMBONE - 4

2595

UNTIL I MET YOU

Arr. Chico O'Farrill

(MED. ♩ = 152)

BUCKET MUTED

(A) 6

(PIANO INTRO)

(B) 6

(C) 2

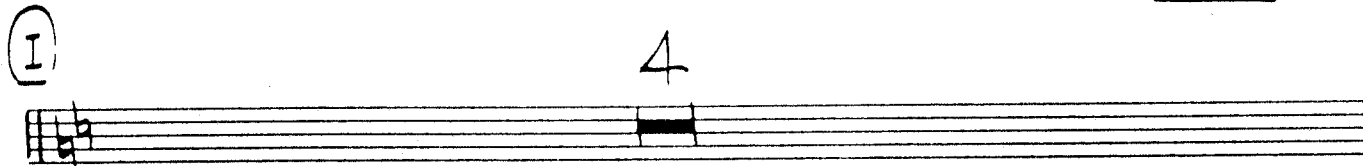
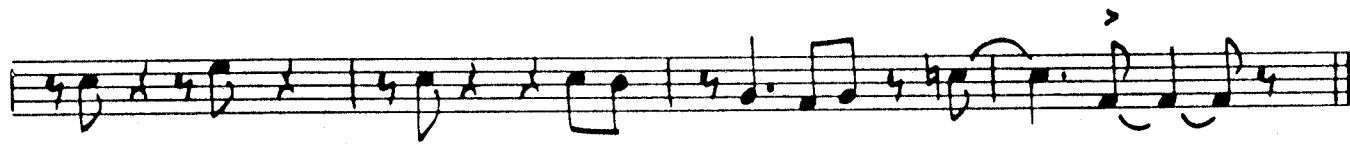
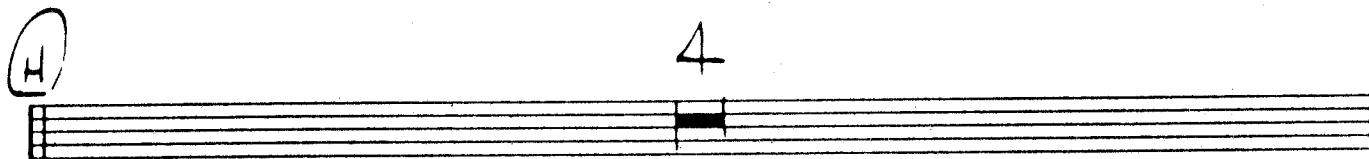
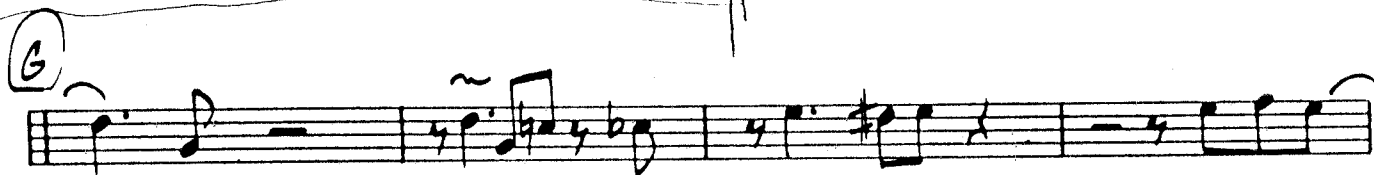
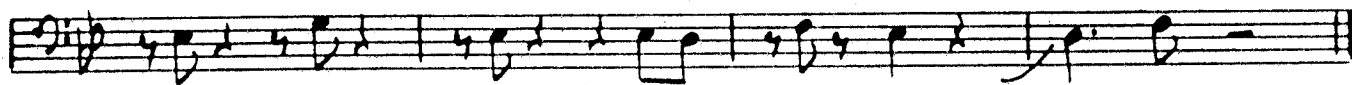
3

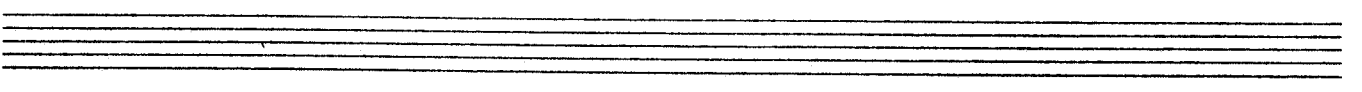
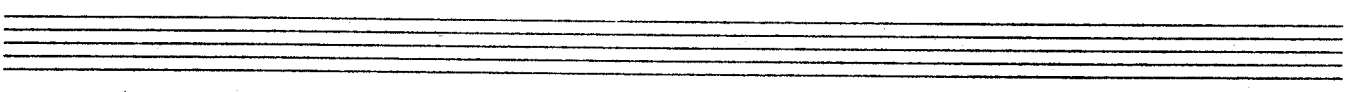
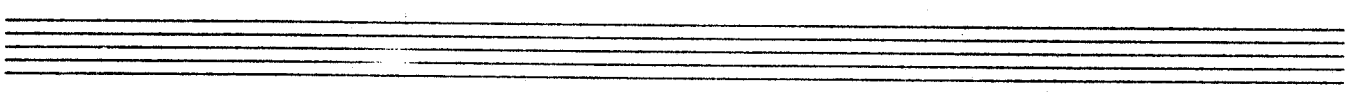
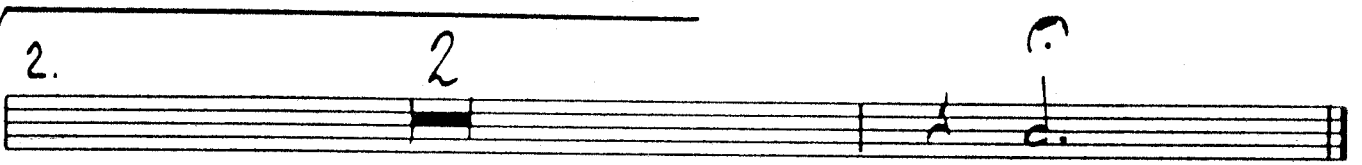
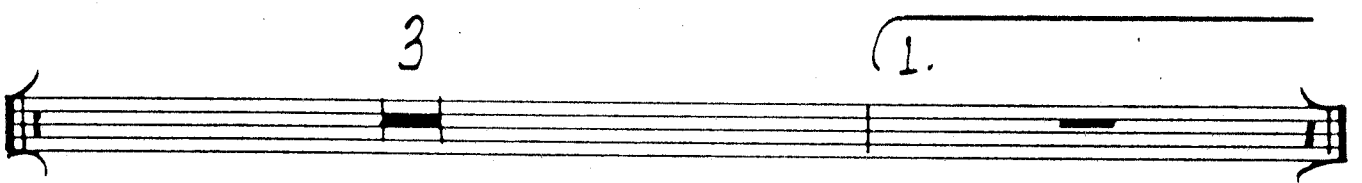
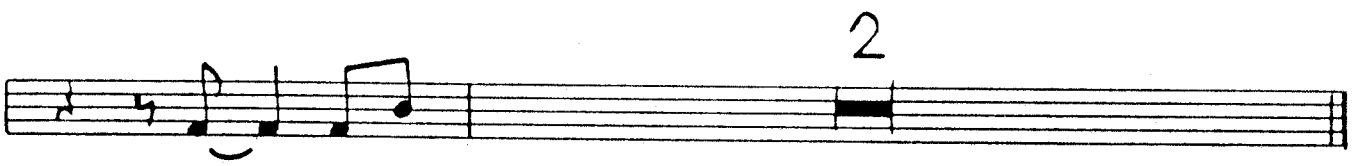
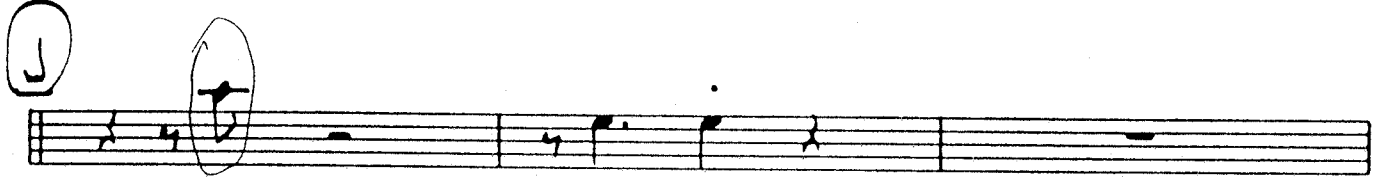
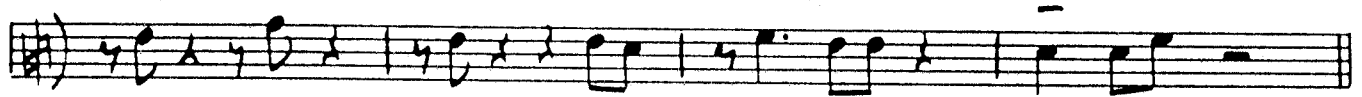
OPENS

(D) 6

CUT

(E) 4





2595

UNTIL I MET YOU

Arr. Chico O'Farrill

MEDIUM ♩ = 152

4

A

Cm7

Cm7/F

F9

BbMA7

Eb9

(PIANO INTRO)

Dm9

G7+5

Cm7

Cm7/F

B7/F

Bb6

F7+5

Bb9

A9

Ab9

G9

B

Cm7

Cm7/F

F9

BbMA7

Eb9

Dm9

G7+5

Cm7

Cm7/F

B7/F

Bb6

A7+5

Ab9

Gm7

C

Fm7

Bb9

Fm7

Bb9

EbMA7

Eb6

Cm7

Gm7

C9

F9

Gb9

Cm7/F

F9

BASS

(D) Cm7 Cm7/F F9 BbMA7 Eb9 Dm9 G7+5

Cm7 Cm7/F B7/F Bb6 Bm7 Cm7 Dm7 G7+5

(E) Cm7 C7+5 Cm7/F F9 Dm7 Ab9 Dm7/G G7+5

Cm7 Cm7/F B7/F Bb6 F7+5 Dm7b5 G7+5

(F) Cm7 C7+5 Cm7/F F9 Dm7 Ab9 Dm7/G G7+5

Cm7 Cm7/F B7/F Bb6 Eb6 E0 Bb/F Gm7 Fm7

(G) BAND SOLI Bb9 Fm7 Fm7/Bb E9 Eb6 D6 Eb6 Cm Cm/Bb Am7 D7b9

Gm7 C9 Gm7 C9 Gb9 F9 E9 F9 Cm7 Bm7/E Cm7/F F9



# BASS

3.

"UNTIL I MET YOU"

H

$Cm^7$   $Cm^7/F$   $F^9$   $B^bMA^7$   $E^b9$   $Dm^9$   $G^7+5$

$Cm^7$   $Cm^7/F$   $B^7/F$   $B^b_6$   $A^b$   $B^b_6$   $Em^7b^5$   $A^7+5$

I

$Dm^7$   $D^7+5$   $Dm^7/G$   $G^9$   $Em^7$   $B^b9$   $Em^7/A$   $A^7+5$

$Dm^7$   $Dm^7/G$   $C^\#7/G$   $C^6$   $G^7+5$   $Em^7b^5$   $A^7+5$

J

$Dm^7$   $D^7+5$   $Dm^7/G$   $G^9$   $Em^7$   $B^b9$

$Em^7/A$   $A^7+5$   $Dm^7$   $Dm^7/G$   $C^\#7/G$

$C^9$   $B^b9$   $Em^7/A$   $A^7+5$   $Dm^7$  1.  $Dm^7/G$   $D^b7/G$

2.  $Dm^7/G$   $D^b7/G$   $C^6$

2595

UNTIL I MET YOU

Arr. Chico O'Farrill

MEDIUM ♩ = 152

A

PIANO INTRO

B

C

# DRUMS

2.

'UNTIL I MET YOU'

D

E

F

G

# Drums

3.

"UNTIL I MET YOU"

(H)

(I)

(J)

1.

2.

1 2 3 4