

balled.

ALFIE

M = straight

ALTO

INTRO

legato

Handwritten musical score for 'ALFIE' in G major, 4/4 time. The score consists of 11 staves of music. It begins with an 'INTRO' section marked 'legato'. The first staff shows a treble clef, a key signature of one sharp (F#), and a 4/4 time signature. The music features a mix of eighth and sixteenth notes, often beamed together in groups of three (trios). Dynamics include mp (mezzo-piano), mf (mezzo-forte), and f (forte). There are several triplets and slurs throughout. A '2nd x' marking with an arrow points to a specific measure in the second staff. The score concludes with a double bar line on the eleventh staff.

Four empty musical staves at the bottom of the page.

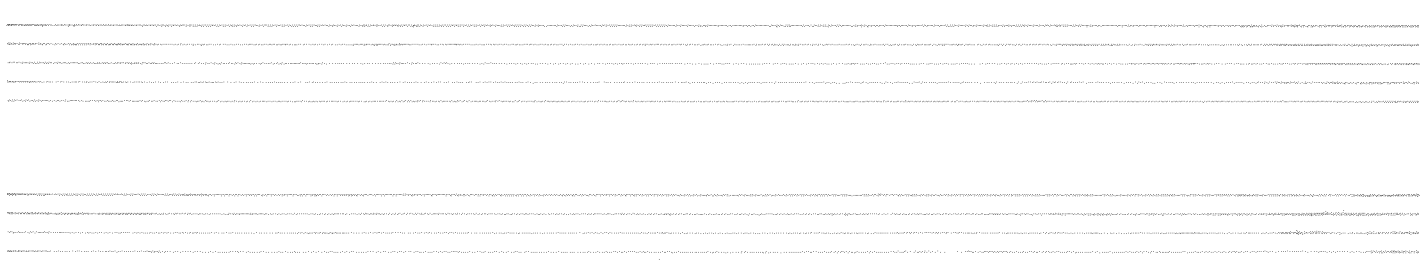
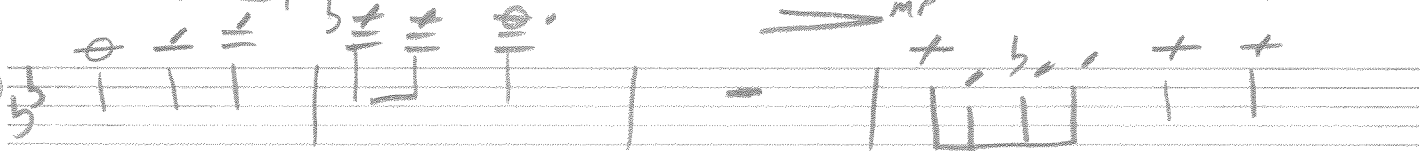
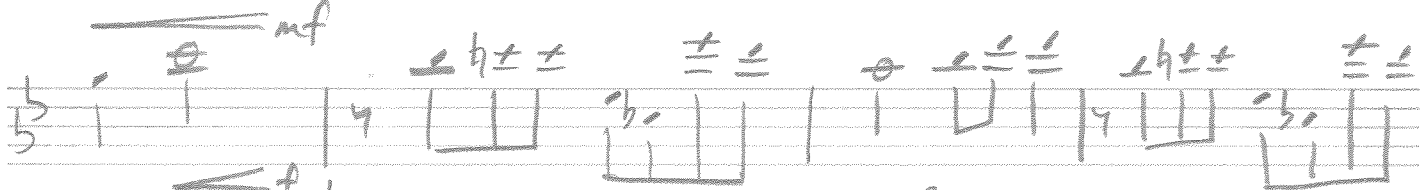
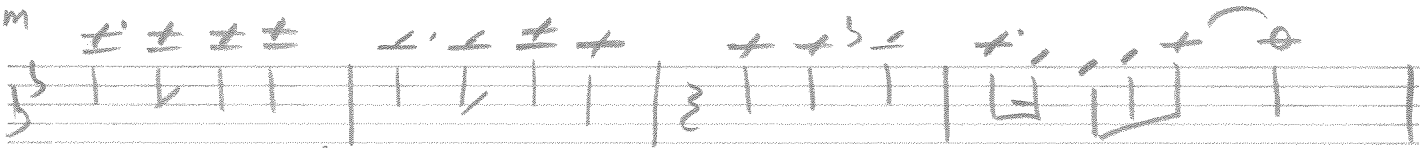
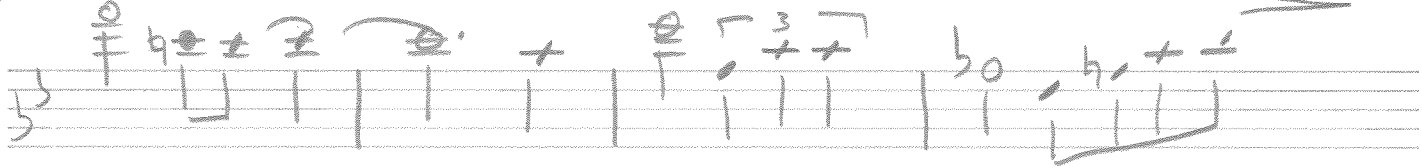
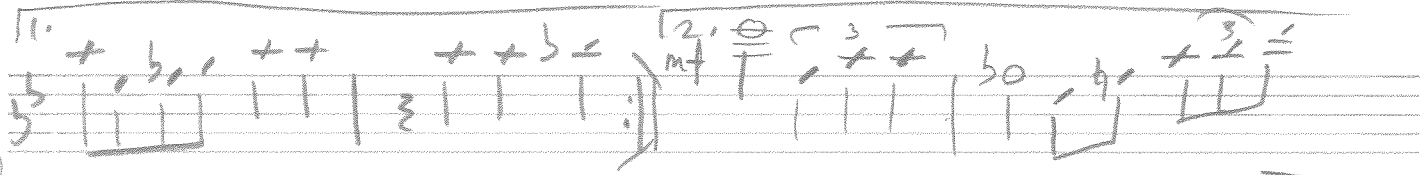
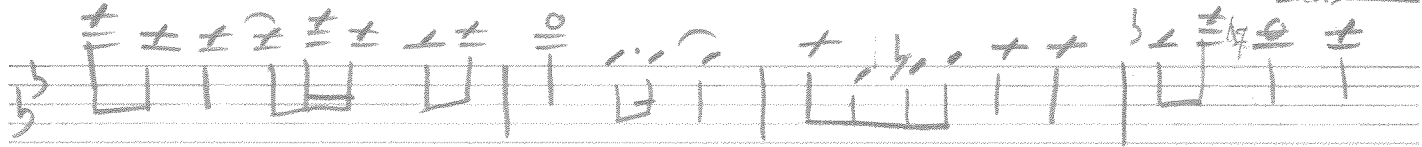
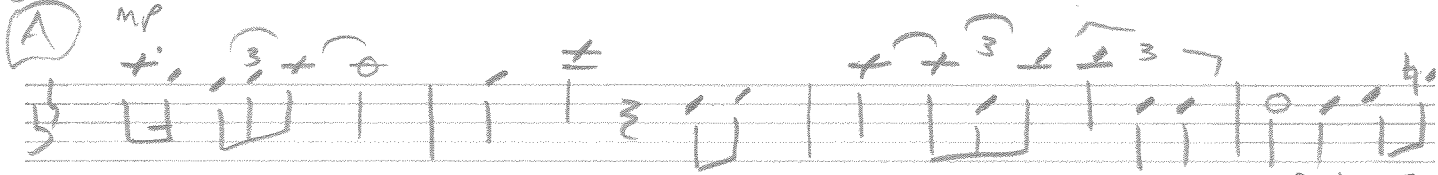
bellaad.

ALFIE

\cap = straight

TRM

INTRO legato



balled.

ALFIE.

7 = straight

TENDER.

INTRO

legato

4

Handwritten musical notation on a five-line staff. It begins with a circled letter 'A' and a dynamic marking 'mp'. The notation includes a series of notes with slurs and triplets. A bracket above the first few notes is labeled 'legato'. The piece concludes with a double bar line.

Handwritten musical notation on a five-line staff, continuing from the previous system. It features notes with slurs and triplets. An annotation '2nd x' with an arrow pointing left is written above the final measure.

Handwritten musical notation on a five-line staff, starting with a first ending bracket labeled '1.' and a second ending bracket labeled '2. mf'. The notation includes notes with slurs and triplets.

Handwritten musical notation on a five-line staff, continuing from the previous system. It features notes with slurs and triplets.

m

Handwritten musical notation on a five-line staff, starting with a dynamic marking 'm'. The notation includes notes with slurs and triplets.

Handwritten musical notation on a five-line staff, featuring a dynamic marking 'mf' and notes with slurs and triplets.

Handwritten musical notation on a five-line staff, featuring a dynamic marking 'f' and notes with slurs and triplets.

Handwritten musical notation on a five-line staff, featuring a dynamic marking 'mp' and notes with slurs and triplets.

Handwritten musical notation on a five-line staff, concluding with a double bar line.

Empty musical staff lines.

Empty musical staff lines.

ballad

ALFIE

CHORDS.

INTRO

B Δ 7 | F \parallel | ~~_____~~

B Δ 7 | F \parallel | B Δ 7, B Δ 6, | Dm Δ , G Δ , |

Cm Δ | Dm Δ , Gm Δ , | Cm Δ , F \parallel , | B Δ 0

1. Cm Δ / F | F \parallel 2. Am Δ (HEAVIER) | D Δ , C \parallel ,

Am Δ | C \parallel | Am Δ | D Δ , C \parallel ,

F \parallel (LIGHTER) | Dm / F, (F \parallel , | F \parallel ~~_____~~

B Δ 7 | F \parallel | E Δ , E Δ 9, | Dm Δ , Gm Δ , (HEAVIER)

E Δ , E Δ 9, | Dm Δ , Gm Δ , | C Δ 7b5 (CRESC.) | ARPEGGIO (PIANO)

Cm Δ , F \parallel , | B Δ 0 | Cm Δ , F \parallel , | B Δ 0 B Δ 7,

LIGHT

B Δ 0 B Δ 7

~~_____~~

Balled

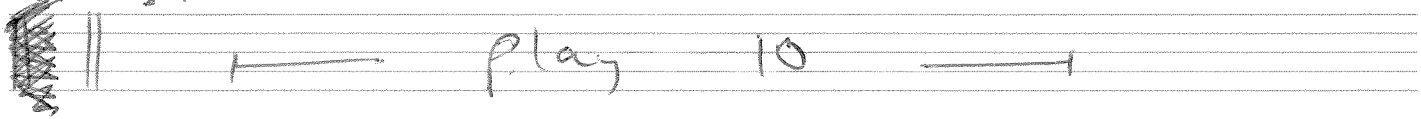
Alfie.

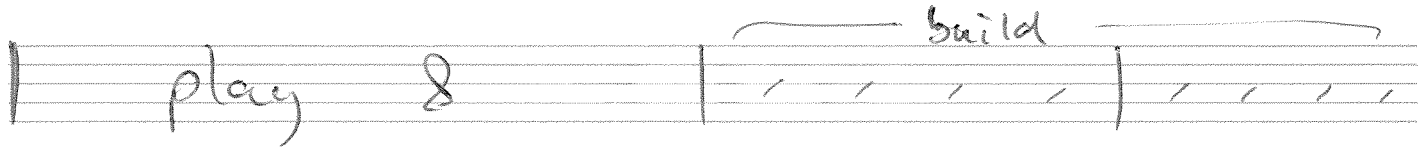
DRUMS.

Brushes - (INTRO)

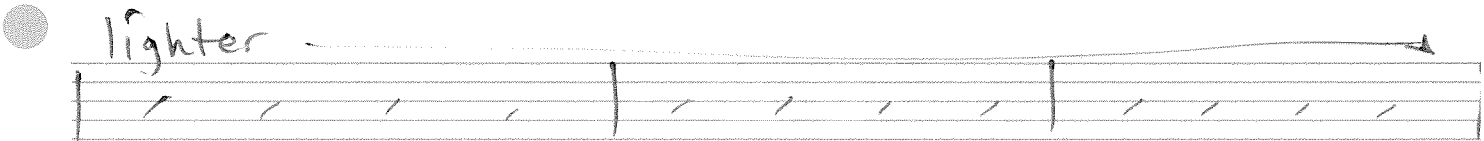
1) 

Slight 1 3/8 feel

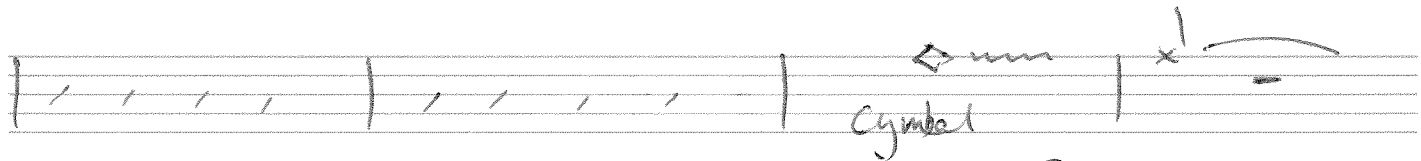


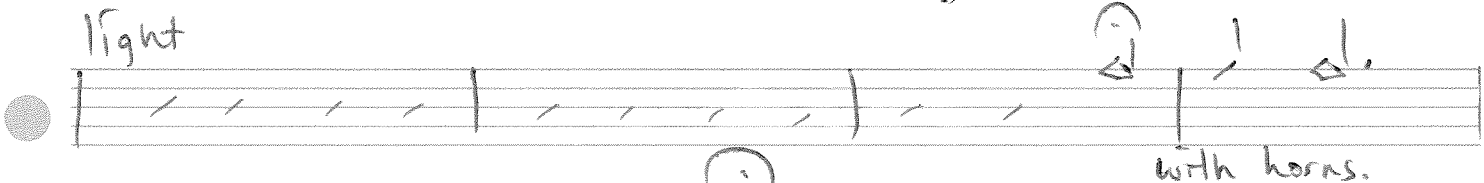


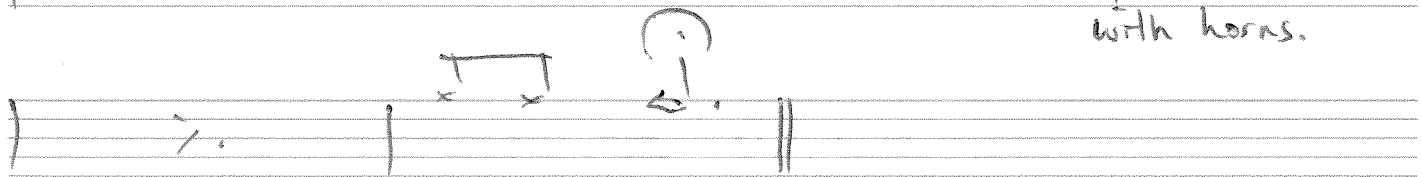


● lighter 





● light 



Roll.

