

MISSION: IMPOSSIBLE.

Guitar.
(distortion)

Intro

A

Solo's on Gm 12 bar (5/4)

B

MISSION: IMPOSSIBLE.

TPT.

Intro.

A

f

Solo's on Gm 12 bar

B

KEY

1.

2.

D. Cal Cada

MISSION: IMPOSSIBLE.

ALTO.

Intro
5
4



(A) # - 3 | 7. | 7. | 7.

f # 1 1 1 1 | 1 1 1 1 | 1 -

- 3 | - 3 | !, !, !, ! | 0

- 3 | - 3 | - 3 | , 5 0 | , 5 0

5 0 | 5 0 | 1 1 1 1 | 1 -

- 3 || Solos on Gm 12 bar ||

(B) KEY! f 1 1 1 1 | 1 1 1 1 | 1 1 1 1 | 1 1 1 1

1. 1 1 1 1 | 2. 1 1 1 1 | 1 1 1 1 | 1 1 1 1

1 1 1 1 | 1 1 1 1 | 1 1 1 1 | 1 1 1 1

1 1 1 1 || D.C. al f ||

1 1 1 1 ||

MISSION: IMPOSSIBLE

TRAM.

Intro

(A)

Solo's on Gm 12 bar

(B)

KEY!

D.C. al ϕ

MISSION: IMPOSSIBLE.

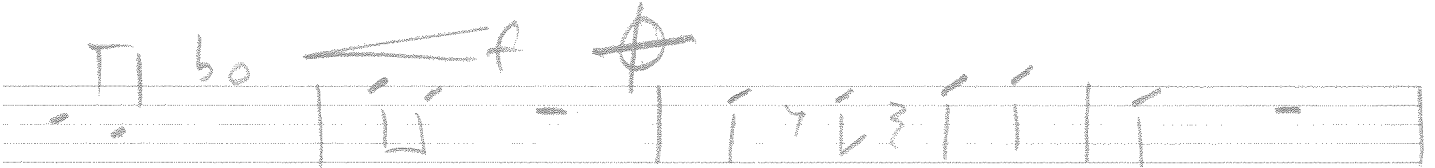
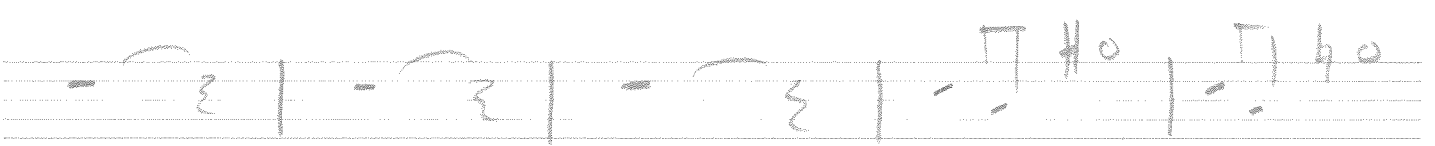
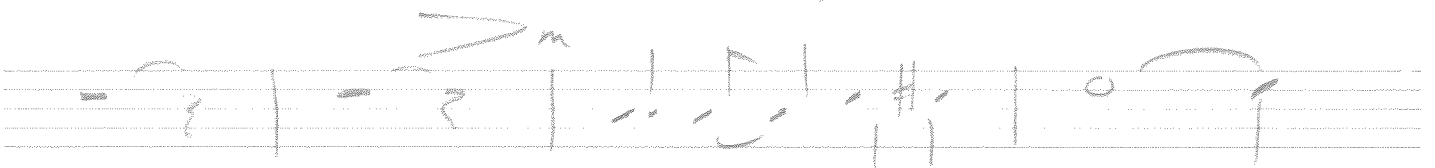
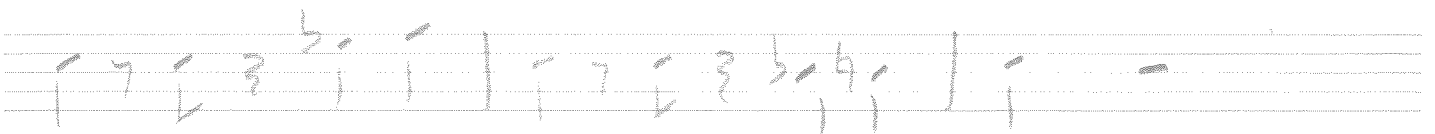
TENOR

Intro

5/4

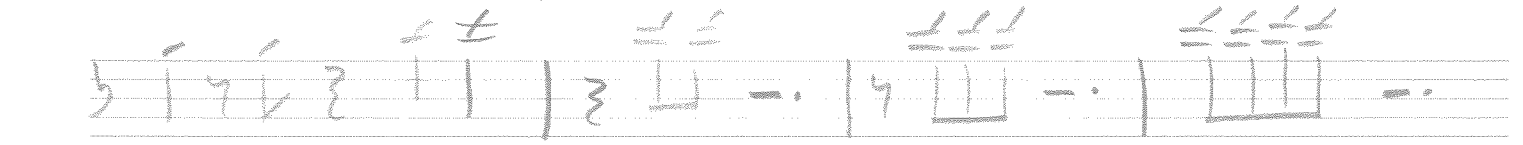
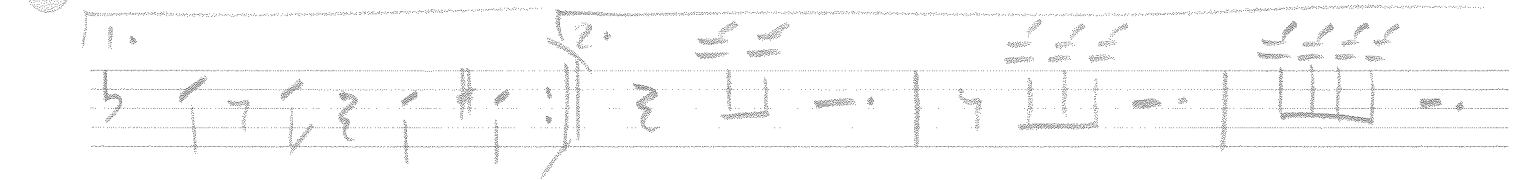
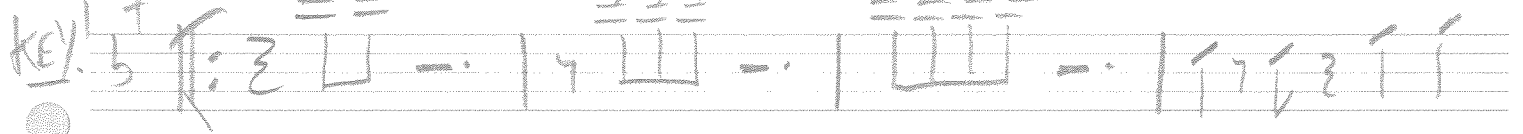


(A)



Solo's on Gm 12 bar

(B)



D. C. al Fine



MISSION: IMPOSSIBLE.

DRUMS.

Intro

5
4

x 8

A Cont. groove

20 bars.

Solo's on 12 bar

B

17 bars

Rpt Intro 8 bars.

Rpt A 18 bars

fills